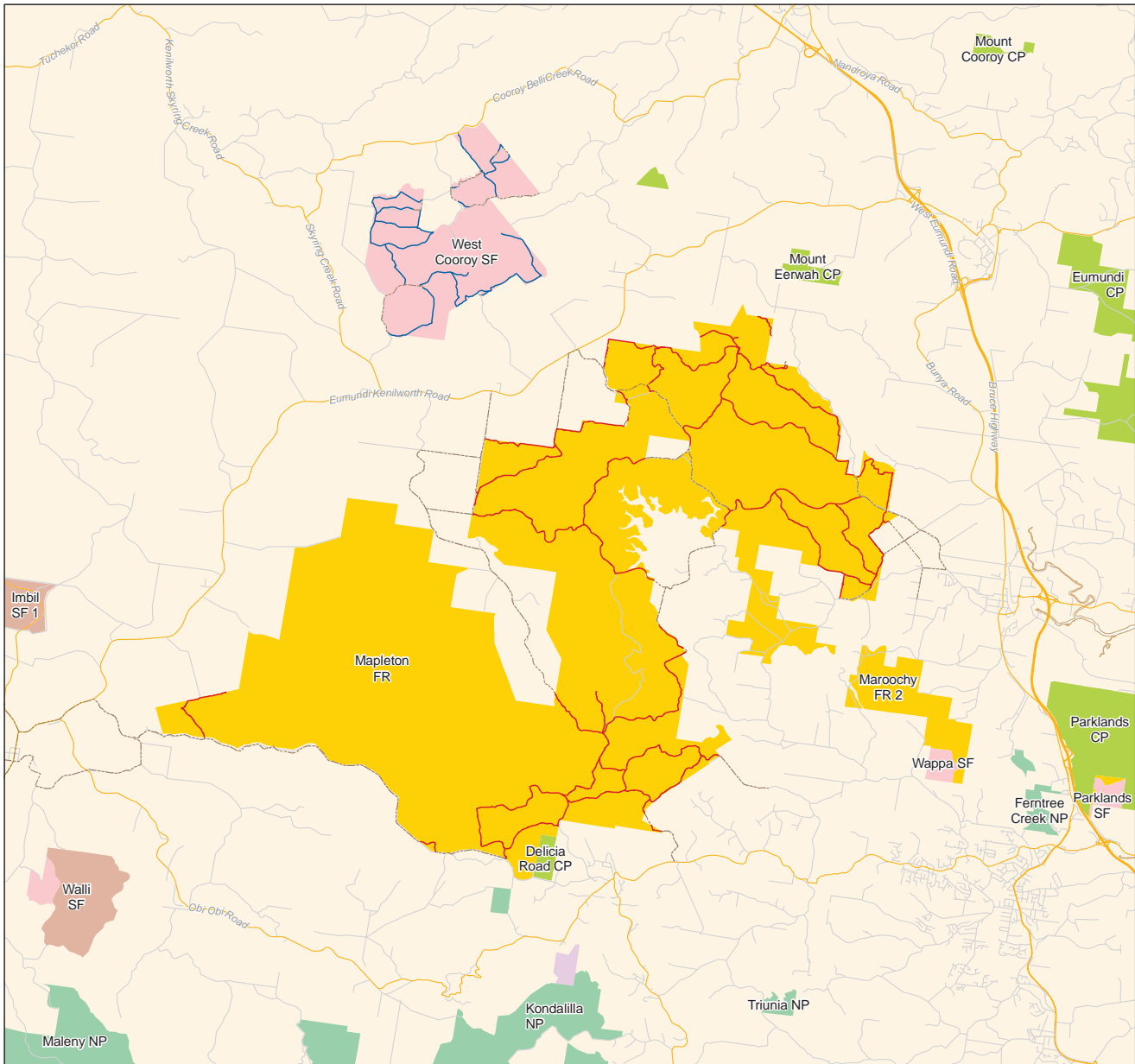


Map 3 – Mapleton trail group

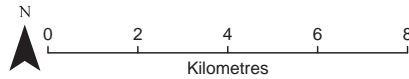


SEQ horse riding network Mapleton Region

- Finalised horse trails (see note 1)
- Indicative trail on state forest and timber reserve (see note 1)
- - - Indicative trails on plantation forest estate (see note 2)
- - - Indicative trails on other lands (see note 3)
- Highways
- Major roads
- Other roads
- State plantation forest
- Protective areas of Queensland**
- National park (scientific) (NS)
- National Park (NP)
- National Park (recovery) (NC)
- Conservation park (CP)
- Resources reserve (RR)
- Forest reserve (FR)
- State forest (SF)
- Timber reserve (TR)
- Other lands (LO)

NOTES:

1. Access to horse trails are subject to the operational requirements of the Queensland Parks and Wildlife Service.
2. Access to forest plantation areas are subject to the operational requirements of State Plantation Forests.
3. Access to off park linkages are indicative only and, where appropriate, require the permission of the landholder. It is the responsibility of horse riders to determine appropriate access requirements.



Produced on September 15, 2010.

Whilst every care is taken to ensure the accuracy of this product, the Department of Environment and Resource Management makes no representations or warranties about its accuracy, reliability, completeness or suitability for any particular purpose.

The Department of Environment and Resource Management disclaims all responsibility and all liability (including without limitation and liability in negligence) for all expenses, losses, damages (including indirect or consequential damage) and costs which might be incurred as a result of the product being inaccurate or incomplete in any way and for any reason.

