

# Activity Sheet 1 *(for 9+ year old)*

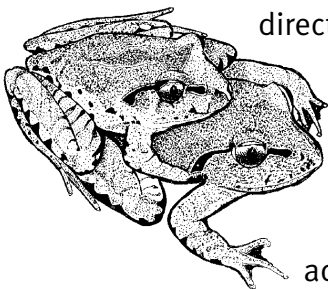
## Dalrymple circuit, Goomburra, Main Range National Park

Draw a line to match the word with the statement

lava	a stream flowing into a larger stream or other body of water
solidified	beside or along the bank of a river, creek or other water course
extinct	few in number; thinly distributed over an area, or few and widely separated
atmosphere	having pores or openings that allow liquids or gasses to pass through.
permeable	hot liquid rock which comes out of the earth through a volcano
pollutant	invisible rays that are part of the energy that comes from the sun
rare	no longer existing
riparian	something that has a harmful effect on the environment
weathering	the mixture of gasses surrounding the earth; the air.
tributary	movement of weathered material by the action of water, glaciers, winds, waves, gravity
erosion	to make solid; change from a liquid or gas to a solid form
ultraviolet radiation	break down of rock into smaller particles

Fill in the gaps

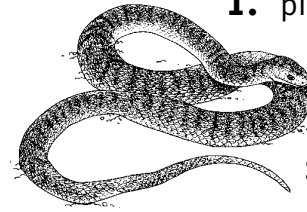
Protect Fleay's barred frog habitat by not using or discarding \_\_\_\_\_, detergent, shampoo or any other potential \_\_\_\_\_ in the creeks or along their banks; keeping to \_\_\_\_\_ and crossing \_\_\_\_\_ directly where the track crosses the \_\_\_\_\_ creek; not disturbing or removing \_\_\_\_\_ or trampling \_\_\_\_\_ in or directly adjacent to the creek.



Bp1587

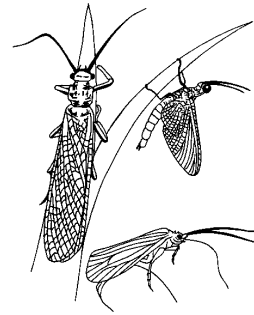
## Circle the correct answer

If you see a snake, do you



- pick it up?
- stand well away, avoid annoying it and give it time and room to get out of your way?

- try to kill it? (*definitely not*)

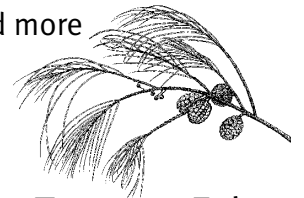


## True or False?

- The presence of caddisflies, stoneflies and mayflies indicates good water quality.

> True or > False

- Forest she oak *Allocasuarina torulosa* has larger cones and more drooping branchlets than the river she oak *Casuarina cunninghamiana*.



> True or > False

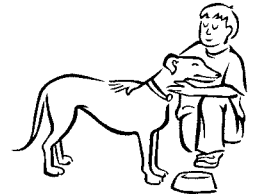
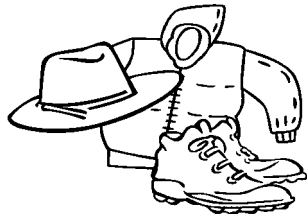
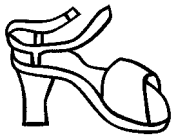
## Did you know?

While in amplexus (mating embrace), the female Fleay's barred frog slowly rotates, scraping out gravel (or submerged leaf litter) to create a depression that is a nest for her eggs. She lays the eggs in small batches as the mating frogs continue to rotate. This fragile nest, along with the eggs and tadpoles, can be easily crushed. *Please keep out of the creek.*

# Activity Sheet 2 (for 9+ year old)

Dalrymple circuit, Goomburra, Main Range National Park

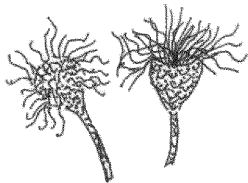
## Circle what you should take on a bushwalk



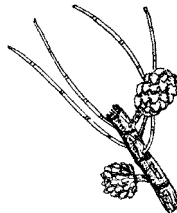
## Did you know?



Male flowers

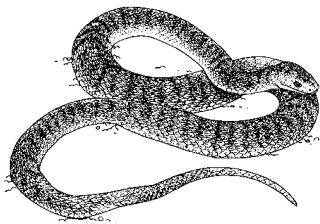


Allocasuarina  
Female flowers



Female fruit

Some plants are *dioecious*, which means individual trees are either male or female. *Di* means two and *oecious*, from the Greek oikos, means house. Usually both male and female sex organs are on the same plant (they are *monoecious*).



## True or False?

The rough-scaled snake *Tropidechis carinatus* is active only during the day.

> True or > False

Q. What is smarter than a talking parrot?

A. A spelling bee!

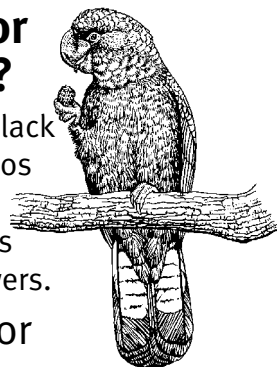
## Did you know?

The spiny cray *Euastacus jagara* occurs only in the local area. The species' name *jagara* is probably named after the Aboriginal language of the Mount Mistake area.

## True or False?

Glossy black-cockatoos eat only gum nuts and flowers.

> True or > False



## Describe the stump

Use at least two words to describe what it would have been like to cut down such a large tree by hand.

What was the timber used for?

## Fill in the gaps



Overhanging trees provide \_\_\_\_\_ and \_\_\_\_\_ for aquatic animals and plants.

Plants \_\_\_\_\_ creek banks, reducing erosion and protecting \_\_\_\_\_ quality.

Submerged tangled tree \_\_\_\_\_, leaf litter and fallen \_\_\_\_\_, as well as rocks, crevices and \_\_\_\_\_ provide a range of \_\_\_\_\_.