

Flinders Karawatha Corridor

Consultation Report 2012



#29927

Prepared by: Department of Environment and Resource Management

© The State of Queensland (Department of Environment and Resource Management) 2012

Disclaimer

This document has been prepared with all due diligence and care, based on the best available information at the time of publication. The department holds no responsibility for any errors or omissions within this document. Any decisions made by other parties based on this document are solely the responsibility of those parties.

If you need to access this document in a language other than English, please call the Translating and Interpreting Service (TIS National) on 131 450 and ask them to telephone Library Services on +61 7 3224 8412.

This publication can be made available in an alternative format (e.g. large print or audiotape) on request for people with vision impairment; phone +61 7 3224 8412 or email <library@derm.qld.gov.au>.

January 2012

#29927

Contents

1.0 Background	1
2.0 Purpose of the consultation	2
3.0 Public consultation promotion.....	3
4.0 Consultation with industry groups.....	4
5.0 Public meetings and responses.....	5
6.0 Summary of key issues discussed with key stakeholders during consultation	8
7.0 Key changes and recommendations based on written responses.....	9
8.0 Summary of key implementation implications.....	11

1.0 Background

The Queensland Government announced a five year vision for Flinders Karawatha Corridor (the corridor) on Wednesday 9 November 2011. The corridor represents a whole of landscape approach to rural landscape protection and conservation.

In partnership with the respective local governments of Ipswich, Scenic Rim, Logan and Brisbane, the Commonwealth Department of Defence, various state government departments and South East Queensland Catchments, the Queensland Government is working on ensuring the future of the corridor under a Memorandum of Understanding signed in 2008.

This 60km corridor extends from Karawatha Forest in Brisbane's outer suburbs to Flinders Peak along to the south of Ipswich and on to the Wyaralong Dam near Boonah.

The five year vision is to ensure the protection of the broad range of values contained in the corridor by enacting and utilising provisions of the South East Queensland Regional Plan 2009-2031 (the plan). The plan recognises the high environmental, social and economic values of this corridor and specifically acknowledges its importance in Desired Regional Outcome 3.2 which requires the protection of 'Regional Landscape Areas to focus coordinated planning, management and investment in priority regional landscape areas to optimise multiple community benefits'. The corridor project will protect these values under the various local government planning schemes, and also through State Planning Policies.

The government's announcement outlined the first critical steps to achieve the protection of the corridor. These include:

- Consultation on the draft vision and boundary of the corridor by 16 December 2011; and
- Completion of a land use plan to identify appropriate land uses and priority areas for protection by 9 April 2012.

The consultation period to seek community advice on the corridor's boundary began on 9 November 2011. A promotional brochure and tools, and website information was developed in order to describe the proposal. The Department of Environment and Resource Management (the department) formally invited community and stakeholder feedback. The following report is a summary of the actions undertaken and the results of the consultation.

2.0 Purpose of the consultation

A consultation program was undertaken to seek community feedback on the proposal and its affects on the economic and environmental aspirations of local residents and whether the draft boundary was effective in achieving the aspiration of the draft vision for the corridor.

Consultation and review of the administrative boundary was sought to determine where and how the relevant plan policies apply.

Landholders residing within the footprint of the corridor were posted an invitation on 11 November 2011 to attend community meetings or to provide feedback on the draft cadastral boundary of the corridor and draft vision.

The community meetings were held on 21 November 2011 at the Greenbank Community Hall at Greenbank and on 26 November 2011 in the morning at Hardings Paddock, Purga, and in the afternoon at Queens Park Ipswich.

Separate industry, community and stakeholder meetings were also organised and undertaken between 1 November 2011 and 20 December 2011.

Feedback from both the public consultation and stakeholder engagement was taken into account to refine the boundary and inform the vision for the corridor. Key recommendations, themes and other significant issues raised in the consultation process will also be used to prepare the land use plan and revised vision.

3.0 Public consultation promotion

The Flinders Karawatha Corridor Partnership Working Group was sent details of the forthcoming meetings and was asked to promote the details of the meetings. Information on the proposed corridor and the public meetings was provided on the department's website. A link was also published on the front page of the department's website to better advertise its presence. South East Queensland Catchments also provided information on its website to promote the community engagement activities and invite comment.

Traditional Owners were contacted directly through the South East Queensland Catchments Indigenous Liaison Officer. Departmental officers also alerted other indigenous parties through informal networks. South East Queensland Catchments contacted their network of stakeholders and conservation representatives and invited them to attend the meetings.

For the purposes of cross promotion with other relevant State Government initiatives, departmental officers attended the launch of the Boonah to Ipswich Trail on the morning of 26 November 2011 and were available to answer community questions about the corridor.

The department advised that the community would also have further opportunity to comment on community open space proposals and the broader planning for the corridor during the next phase of the project. Departmental staff notified anyone with an interest in the corridor that letters to landholders in the corridor would be sent to advise them of the results of the community consultation and the next phase of the corridor strategy.

In summary, a number of the key background points and reasons for protection of the corridor as well as the community consultation process were provided on the department's website and in letters to landholders.

These background points stated that:

- The key objective of the project is to protect the broad range of values contained in the corridor by enacting and utilising provisions within the *South East Queensland Regional Plan 2009-2031*.
- The Flinders Karawatha Corridor Conservation Partnership was first established in February 2004 to facilitate the coordinated management of the nature conservation, recreation, cultural heritage and social values of the corridor.
- A current Memorandum of Understanding exists and has been used as the basis for coordinated action to achieve a sustainable corridor.
- Since May 2011 regular meetings of key stakeholders have been convened by the Chair of the SEQ Regional Implementation Group to progress the project.
- The Queensland Government on 9 November 2011 endorsed the Department of Environment and Resource Management to undertake public consultation on the proposed boundary and draft vision for the corridor.

4.0 Consultation with industry groups

To ensure land development organisations were informed about the proposal, the Department of Environment and Resource Management met with industry groups including the Property Council of Queensland and the Urban Development Institute of Australia.

The relevant government-owned energy corporations and water utilities were also consulted on this initiative and are generally supportive of this proposal, and have requested on-going involvement by the department as the proposal is developed further.

5.0 Public meetings and responses

The department prepared a mail-out to all of the landowners who had property within the draft corridor footprint. Details include:

- Approximately 2200 landowners were identified and mailed a copy of a brochure on 10 November 2011 and informed about opportunities to comment as well as provided landholders with an invitation to attend the aforementioned community meetings.
- The mail-out was sent out under the auspices of the South East Queensland Regional Implementation Group (SEQRIG).
- Each letter contained information explaining the vision together with a brochure that had been developed.
- The letters listed two public meetings. The first was held at the Greenbank Community Centre on 21 November 2011 and the second meeting on Saturday 26 November 2011 at the Queen's Park Environmental Education Centre in Ipswich.
- Responses to the mail out were asked to be directed to South East Queensland Catchments as first point of contact.

A total of 45 people attended the public meetings and a number of people had one-on-one discussions with departmental staff at the launch of the Boonah-Ipswich Trail. The two key themes for the corridor community meetings included:

How can we improve on the effectiveness of the boundary?

Question 1: The boundary is being delineated for the purpose of defining the area under the South East Queensland Regional Plan (the plan). The purpose of this discussion is to test the boundaries relevance with local knowledge. Various interests and issues should be explored, such as:

- Are there areas that should be in or left out from the footprint of the corridor?
- What opportunities exist within the footprint?
- What are some of the constraints?

Discuss improving the proposed vision

Question 2: The draft vision is based on past projects in the corridor and the views of the current project partners. What can be done to build on or improve this vision? This topic is very broad but should not be heavily constrained by any person's view. Whilst consensus is very hard to build it should seek to identify common ground. There are also some key land uses that should be considered as part of the vision, such as:

- There are a number of existing reserves established for conservation and recreation purpose.
- A number of regional services and infrastructure projects have already been approved or are in the advanced planning stages.
- Large areas in the corridor exist within freehold private property

It was pointed out that the proposed planning mechanism will not impact on existing property rights. This includes committed development and exemptions under the *Vegetation Management Act 1999*. However, due to concerns from some landholders

in the corridor, considerable time was spent at each workshop discussing the impact on individual property rights and the long-term aspirations of individual landholders with respect to plans for their properties.

The department acknowledged that further work is needed to explain how the corridor could benefit landholders, the regulatory framework in the plan and its implications to the corridor since 2005.

Below is a summary of the key issues and themes discussed in small working groups during the two public meetings (Table 1).

Table 1: Summary of comments from Flinders Karawatha Corridor public meetings

Corridor improvement recommendations (linkages, extensions, environmental values and land use improvements)
<ul style="list-style-type: none"> • Extend the corridor to the NSW border and incorporate the following areas: Jerry’s Downfall Reserve, Flessler Reserve, Kurby Bushland, Blunder Creek, Oxley Creek, Bulimba Creek, Teviot Brook riparian zone, Scrubby Creek, Berrinbah Wetlands/Robinson land, wetlands on the western end of Flagstone estate (or entire Flagstone ULDA) and wetland area east of Greenbank ULDA. Where corridor can’t be extended link them as much as possible.
<ul style="list-style-type: none"> • Wildlife connection from proposed industrial land on Johnson Road to Greenbank Military Training Area needs consolidation.
<ul style="list-style-type: none"> • Sporting Shooters Daley’s Lagoon should be buffered from the urban development area at Ripley.
<ul style="list-style-type: none"> • Clear guidelines for land stewardship and how to involve people in wildlife corridor linkages on their land and in the area are required.
<ul style="list-style-type: none"> • More research and studies including: <ul style="list-style-type: none"> ○ animal surveys for rare and endangered species such as quolls, rock wallabies, rare frogs, grey-headed flying fox, koala, feral animal survey (utilise Griffith Uni ecology unit) ○ ground truthing of recorded data ○ field assessment for recovery plan ○ investigations into fauna movement/pinch point design and location ○ survey for Commonwealth land ○ biodiversity hotspot mapping ○ Wyaralong recreation area review.
<ul style="list-style-type: none"> • Stop any future development in the corridor including residential, industry and mining.
<ul style="list-style-type: none"> • Coordinated plans for managing fire and feral animals in and around the corridor.
<ul style="list-style-type: none"> • Better coordination and integration with local government including better standards and incentives to protect and create buffer zones.
<ul style="list-style-type: none"> • Carry out extensive community education and engagement throughout the corridor. Work with the people in the Rural Living Precinct (north-west Greenbank) on this and work towards more targeted trust building and relationships with landholders and the community. Ensure landholder acceptance and absentee landholders also get included. Make sure the message is consistent and credible. Include reviews of community involvement.
<ul style="list-style-type: none"> • Limit/manage recreation within the corridor, particularly mountain biking and trail bikes.
<ul style="list-style-type: none"> • Analyse social/environmental/economic values for best outcome for everyone.

<ul style="list-style-type: none"> Investigate property with exemptions to clear vegetation under the <i>Vegetation Management Act 1999</i> and addressing further clearing issues critical to reduce or prevent further loss of bushland.
<ul style="list-style-type: none"> Add value through mechanisms such as biodiversity fund, landcare, carbon offsets.
<ul style="list-style-type: none"> Encourage the surrender of 1500ha of essential koala habitat at Flagstone.
<ul style="list-style-type: none"> Ensure ecosystem services and specific interests as entry points.
<p>Comments on the corridor vision:</p>
<ul style="list-style-type: none"> Establish clear guidelines and encourage 'stewardship' for good land management.
<ul style="list-style-type: none"> Create an identity for the corridor (including a better name) and define the five year vision.
<ul style="list-style-type: none"> Change of vision statement to include 'protect' rather than 'ensure' and remove 'limitless'.
<ul style="list-style-type: none"> Ensure real targets are included in the final plan and there is a budget to achieve this.
<ul style="list-style-type: none"> Discuss nature of funding i.e. government versus private.
<ul style="list-style-type: none"> Ensure long-term infrastructure plans e.g. 50 years and co-location of infrastructure as a solution to dealing with linear infrastructure work i.e. designated infrastructure corridors. Also co-locate gas pipe so it is in the best location possible.
<p>Potential Threats:</p>
<ul style="list-style-type: none"> Land for wildlife constraints. Some considered secure agreements were needed to protect vegetation on private property.
<ul style="list-style-type: none"> Undullah Road widening likely to cause more bushland fragmentation.
<ul style="list-style-type: none"> Intensive horticulture in the Greenbank area, mining exploration, incompatible land uses.
<ul style="list-style-type: none"> How to police/enforce corridor rules and regulations.
<ul style="list-style-type: none"> Park Ridge Connector threatens connections to the corridor.
<ul style="list-style-type: none"> Perceived loss of rights of existing landowners.
<ul style="list-style-type: none"> Safety of land management practices.
<ul style="list-style-type: none"> Surrounding development and encroachment on the corridor (increasing population pressure).
<ul style="list-style-type: none"> Local council planning 'strata titles' loophole.

6.0 Summary of key issues discussed with key stakeholders during consultation

The department emphasised that the State Government is working in partnership with local government, the Australian Government, and South East Queensland Catchments to develop a land use plan for the corridor.

As a result, the intent and meaning behind the concept of preparing a land use plan was discussed with a number of stakeholders and participants during the consultation phase. It was agreed by the project partners that the land use plan should represent a management plan so this aspect of the project has been re-named as the Flinders Karawatha Corridor Management Plan. This also provides greater consistency with the regional plan and the policies dealing with the corridor.

A number of key elements and issues were identified during the consultations and for the preparation of the corridor management plan. These include:

- An investigation to determine potential resource approaches to assist in implementing the vision for the corridor including development offsets, conservation agreements and other land management mechanisms.
- The project partners working group agreed that any such proposal will also need to investigate alternative non-government funding streams including offsetting mechanisms and carbon farming initiatives.
- The project partners also noted that landholders, particularly property developers who have made speculative purchases in the corridor, should be encouraged to utilise properties in the corridor as potential offsets for other development.
- Any long-term management matters may require the creation of new policy initiatives to create funding streams to allow for necessary purchases of land, voluntary protection measures, and retrofitting of engineering solutions to existing pinch points. Such measures may include directing offsets and creating strategic investment opportunities which facilitate these outcomes in the corridor.
- Noting that offsets policies (vegetation management and biodiversity) may provide opportunities for securing other strategic parcels of land.
- The project partners recommended the emerging Carbon Farming Initiative may also provide resources for landholders to restore regrowth vegetation in the corridor.
- At the public meeting departmental staff explained how environmental offsets may benefit the corridor and that existing property rights are not diminished by these actions.
- Environmental offsets trading will allow property developers to purchase credit for managing their land in the corridor for conservation whilst gaining access to develop land they have purchased in more suitable locations in the landscape for urban or other forms of development.
- The concept of environmental offsets received a mixed reaction from the community. The department noted that this requires further development to both communicate how this trading offsets would work and how net gains for the environment would be achieved through such proposals.

7.0 Key changes and recommendations based on written responses

The department received a number of recommendations from a total of 56 responses from landowners and other stakeholders. Respondents included state and local government agencies, property development groups, environmental organisations, recreation interests and private landholders. Key actions in response to the submissions include:

- Comments regarding wildlife and people movement through the Logan motorway are noted. The department is undertaking further consultation with key stakeholders and linear infrastructure providers to develop solutions to these issues. Providing green infrastructure for people and wildlife to ensure permeability across and through the corridor will be a critical theme for the corridor land use plan.
- The minimum corridor width of 350 metres has been established by the department in consultation with members of the working group. The department will use its statutory interest to negotiate this preferred outcome wherever feasible.
- The department advised environment and conservation groups that in recent months the department has successfully sought green space and environmental outcomes in the northern end of the corridor. This work complements the significant financial investment Brisbane City Council has undertaken in acquiring land between Karawatha Forest Nature Reserve and the Greenbank Military Training Area.
- The department has consulted with local authorities and other state agencies to ensure there are no conflicts with committed developments or other statutory planning processes. The alignment of the corridor boundary is now consistent with areas such as the Springfield Estate, Urban Development Land Authority and recent acquisitions by local government.

A summary of all the changes adopted by the department to improve the boundary alignment for the corridor can be found in Appendix 1.

Overleaf is a summary of the key themes and issues raised by the written responses (Table 2).

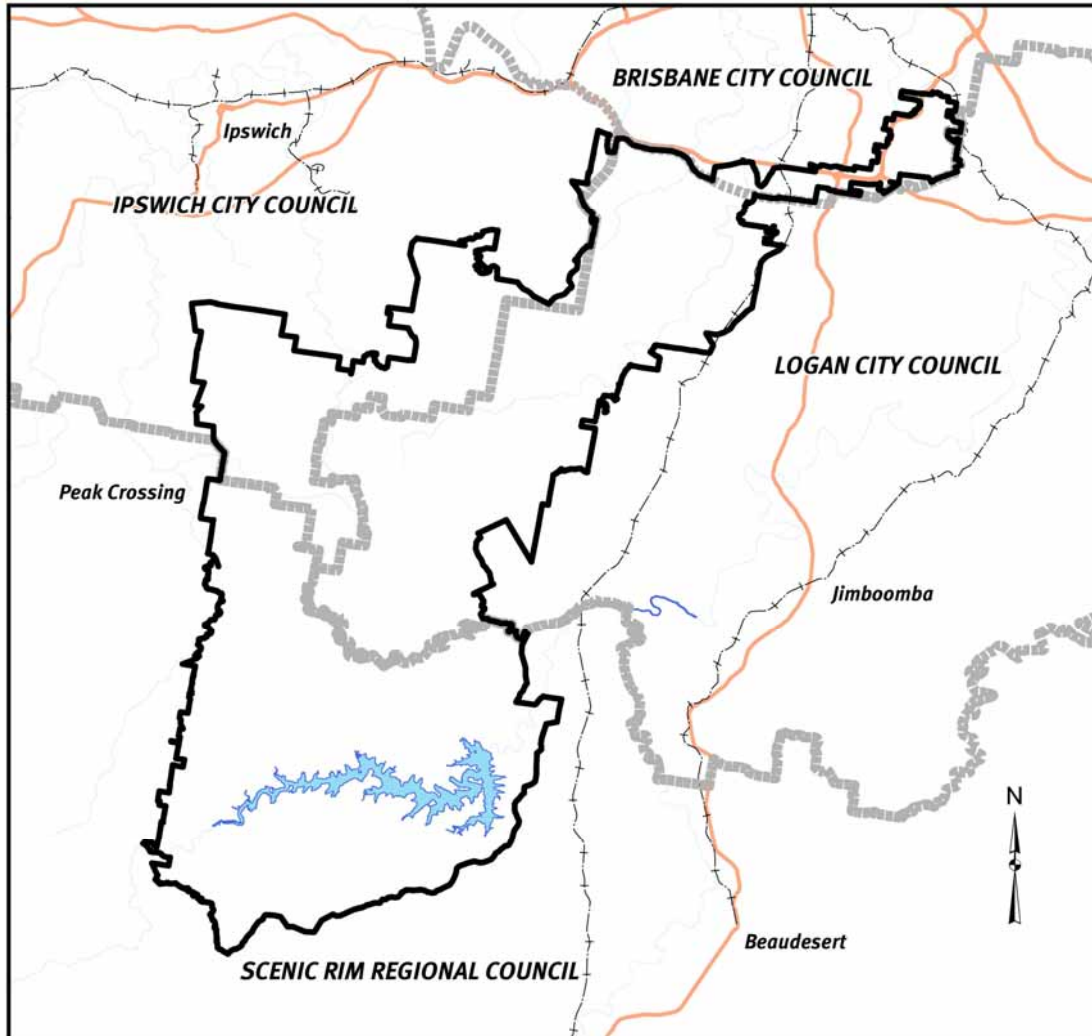
Table 2 Summary of responses to letters mailed to landowners and public meetings

Corridor Boundary
<ul style="list-style-type: none"> • Overall, 30 land parcels were excluded from the draft corridor and 85 new land parcels were included.
<ul style="list-style-type: none"> • The draft boundary has been changed to better align to local government planning schemes.
<ul style="list-style-type: none"> • Boundary changes were made to exclude committed development.
<ul style="list-style-type: none"> • It is apparent from comments received that the South East Queensland Regional Plan is not well known or understood by the general community. As a result: <ul style="list-style-type: none"> ○ Concerns were expressed on the impacts of the corridor on existing property and development rights ○ Other concerns expressed were issues involving land use conflicts; however on closer inspection these were found to be in accordance with the plan.
<ul style="list-style-type: none"> • Several suggestions were made to continue the corridor south to the NSW border.
<ul style="list-style-type: none"> • Environmental organisations pushed for extending the corridor along lesser corridors, such as existing riparian corridors.
Corridor vision/future management
<ul style="list-style-type: none"> • Suggestions to change the name of the corridor to reflect it ending near Wyaralong Dam.
<ul style="list-style-type: none"> • Many reported issues of feral pests, dumping of rubbish and illegal vehicle activities in areas of the corridor.
<ul style="list-style-type: none"> • Suggestions were made to expand the newly created Boonah to Ipswich recreational trail into Brisbane and Logan city outskirts.
<ul style="list-style-type: none"> • Suggestions for more mountain-biking trails with an idea to create an internationally recognised trail similar to 'The Mundabiddi Trail' in Western Australia.
<ul style="list-style-type: none"> • Several suggestions to create annual major horse-riding and mountain-biking events.
<ul style="list-style-type: none"> • Support received for the corridor because of perceptions it will provide for more protection of fauna and flora and green infrastructure to enhance fauna mobility.
<ul style="list-style-type: none"> • Questions were received about how offset policies and processes will take effect both inside and outside the corridor.
<ul style="list-style-type: none"> • Government funding arrangements were questioned.
<ul style="list-style-type: none"> • More fauna and flora studies and research were requested inside the corridor to improve knowledge of its values, impacts on these values and remediation required.
<ul style="list-style-type: none"> • Concerns were expressed about the impacts of existing and future infrastructure developments.

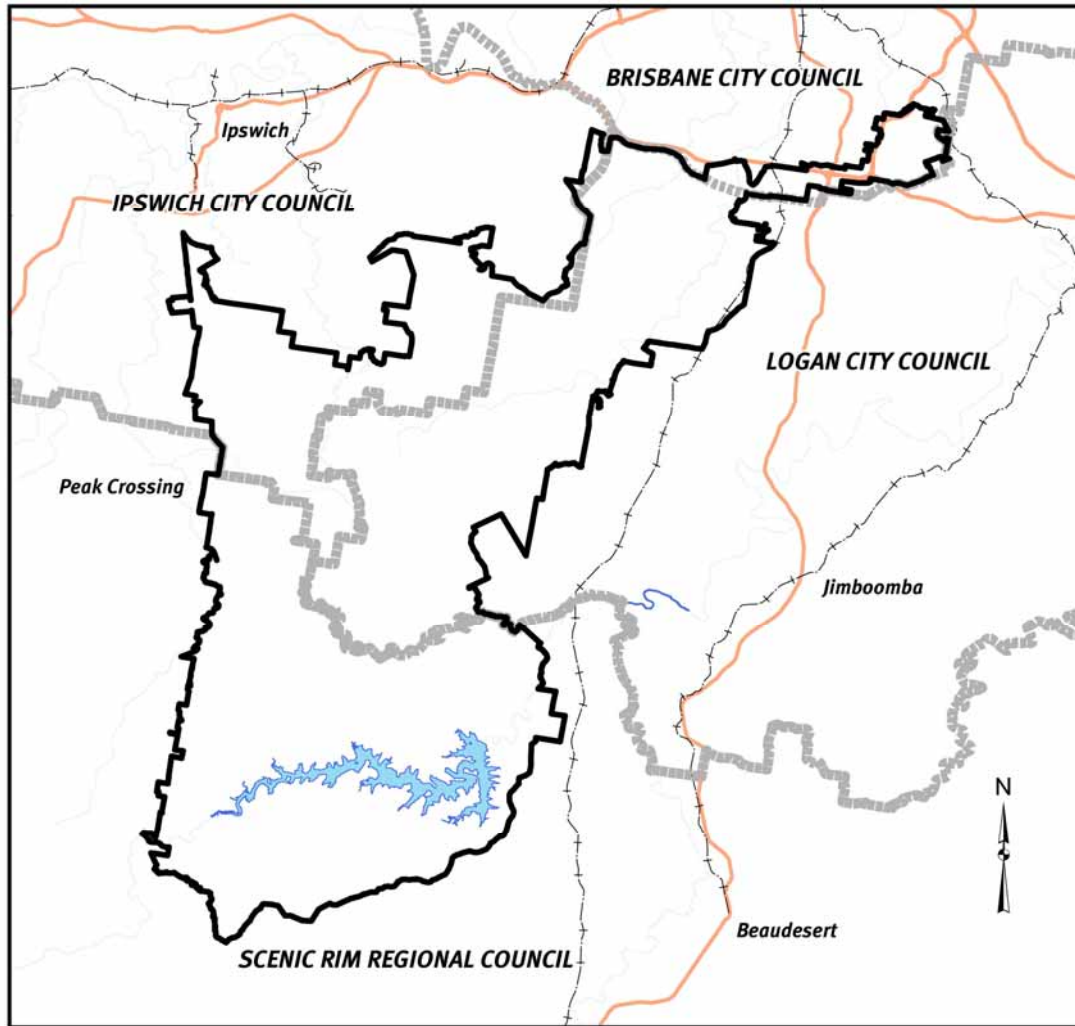
8.0 Summary of key implementation implications

As a result of the boundary changes the department has revised the Flinders Karawatha Corridor map.

For comparison the two maps are shown below and overleaf.



Flinders Karawatha Corridor boundary (after community consultation January 2012)



Flinders Karawatha Corridor boundary (prior to community consultation October 2011)

For the development of next stage of the project the department has noted a number of key themes and issues as a result of the consultation. These include:

- The application of the range of environmental offsets policies.
- Coordination of protected area administration and management with local government
- Funding considerations for potential acquisition of strategic parcels subsequent to the findings of a detailed land use plan (which will be renamed a Flinders Karawatha Corridor Management Plan).
- An assessment of all available funding approaches in the corridor in order to achieve the vision.
- Development of the management plan with key partners providing advice and support. The department will establish a consultation process and write to landholders and stakeholders inviting their input into the plan recognising there is considerable support and interest in a multi-use landscape.
- Further discussions with landholders and rural stakeholders will be held to ensure rural enterprises are consulted and informed on the key aspects of the project as some of the operational aspects of the project become further developed.
- Working with a number of potential partners in delivering the vision for the corridor. The consultation process has revealed several organisations, both government and non-government that have an interest in seeing the vision for the corridor implemented. It will be important to involve many partners in ensuring the long term success of the vision. Working with landholders will be critically important in this process.

Appendix 1
Summary of boundary changes

Parcels OUT	Parcels IN	Description of the Area	Reason For Changes
19W31189		Bromelton State Development Area	Committed Development
2RP32766		Bromelton State Development Area	Committed Development
	19RP88395	Stretton	Part of BCC proposal for reserves or under BCC ownership
	100SP166116	Stretton	Part of BCC proposal for reserves or under BCC ownership
	20SP211326	Stretton	Part of BCC proposal for reserves or under BCC ownership
	102SP166116	Stretton	Part of BCC proposal for reserves or under BCC ownership
	101SP166116	Stretton	Part of BCC proposal for reserves or under BCC ownership
	1270S312436	QLD Archives land, Runcorn	Part of BCC proposal for reserves or under BCC ownership
	1274S312436	QLD Archives land, Runcorn	Part of BCC proposal for reserves or under BCC ownership
	73CP894012	QLD Archives land, Runcorn	Part of BCC proposal for reserves or under BCC ownership
	69CP894012	QLD Archives land, Runcorn	Part of BCC proposal for reserves or under BCC ownership
	ASP221205	QLD Archives land, Runcorn	Part of BCC proposal for reserves or under BCC ownership
	BSP221205	QLD Archives land, Runcorn	Part of BCC proposal for reserves or under BCC ownership
	1269S312436	QLD Archives land, Runcorn	Part of BCC proposal for reserves or under BCC ownership
	11SP231787	QLD Archives land, Runcorn	Part of BCC proposal for reserves or under BCC ownership
	1272CP816103	QLD Archives land, Runcorn	Part of BCC proposal for reserves or under BCC ownership
	CSP221205	QLD Archives land, Runcorn	Part of BCC proposal for reserves or under BCC ownership
	2SP221206	QLD Archives land, Runcorn	Part of BCC proposal for reserves or under BCC ownership
	12SP231787	QLD Archives land, Runcorn	Part of BCC proposal for reserves or under BCC ownership
	1255CP895016	QLD Archives land, Runcorn	Part of BCC proposal for reserves or under BCC ownership
	1SP221206	QLD Archives land, Runcorn	Part of BCC proposal for reserves or under BCC ownership
	1282SP135367	Compton Road Church or Islamic School	Part of BCC proposal for reserves or under BCC ownership
	1265SP111222	Compton Road Church or Islamic School	Part of BCC proposal for reserves or under BCC ownership
	2CP894014	Compton Road Church or Islamic School	Part of BCC proposal for reserves or under BCC ownership
	6CP894014	Compton Road Church or Islamic School	Part of BCC proposal for reserves or under BCC ownership

Parcels OUT	Parcels IN	Description of the Area	Reason For Changes
	50SP163829	Compton Road Church or Islamic School	Part of BCC proposal for reserves or under BCC ownership
	2RP153921	Compton Road Church or Islamic School	Part of BCC proposal for reserves or under BCC ownership
	2SP111222	Compton Road Church or Islamic School	Part of BCC proposal for reserves or under BCC ownership
	5SP163827	Compton Road Church or Islamic School	Part of BCC proposal for reserves or under BCC ownership
	128SP113072	Compton Road Church or Islamic School	Part of BCC proposal for reserves or under BCC ownership
	1287S312436	Compton Road Church or Islamic School	Part of BCC proposal for reserves or under BCC ownership
	9CP894016	Compton Road Church or Islamic School	Part of BCC proposal for reserves or under BCC ownership
	868SP183625	Compton Road Church or Islamic School	Part of BCC proposal for reserves or under BCC ownership
	3RP57877	Compton Road Church or Islamic School	Part of BCC proposal for reserves or under BCC ownership
	1283SP135367	Compton Road Church or Islamic School	Part of BCC proposal for reserves or under BCC ownership
	101SP223255	Compton Road Church or Islamic School	Part of BCC proposal for reserves or under BCC ownership
	1290S312435	Compton Road Church or Islamic School	Part of BCC proposal for reserves or under BCC ownership
	2SP163830	Compton Road Church or Islamic School	Part of BCC proposal for reserves or under BCC ownership
	127SP113061	Compton Road Church or Islamic School	Part of BCC proposal for reserves or under BCC ownership
	3RP203428	Compton Road Church or Islamic School	Part of BCC proposal for reserves or under BCC ownership
	12SP211337	Compton Road Church or Islamic School	Part of BCC proposal for reserves or under BCC ownership
	1266S312435	Compton Road Church or Islamic School	Part of BCC proposal for reserves or under BCC ownership
	1267SP111223	Compton Road Church or Islamic School	Part of BCC proposal for reserves or under BCC ownership
	1286S312436	Compton Road Church or Islamic School	Part of BCC proposal for reserves or under BCC ownership
	867SL6943	Compton Road Church or Islamic School	Part of BCC proposal for reserves or under BCC ownership
	1280S312436	Compton Road Church or Islamic School	Part of BCC proposal for reserves or under BCC ownership
	1281S312436	Compton Road Church or Islamic School	Part of BCC proposal for reserves or under BCC ownership
	ACP900660	Compton Road Church or Islamic School	Part of BCC proposal for reserves or under BCC ownership
	BRP126114	Compton Road Church or Islamic School	Part of BCC proposal for reserves or under BCC ownership
	7CP894016	Compton Road Church or Islamic School	Part of BCC proposal for reserves or under BCC ownership
	1285SP211336	Compton Road Church or Islamic School	Part of BCC proposal for reserves or under BCC ownership

Parcels OUT	Parcels IN	Description of the Area	Reason For Changes
	3RP120264	Compton Road Church or Islamic School	Part of BCC proposal for reserves or under BCC ownership
	4RP203428	Compton Road Church or Islamic School	Part of BCC proposal for reserves or under BCC ownership
1RP886148		Berrinba	Committed Development as per BCC
ASP247594		Berrinba	Committed Development as per BCC
2RP886148		Berrinba	Committed Development as per BCC
	1RP148196	Drewvale	Part of Council Ownership and/or essential for addressing pinch points.
	18RP813770	Drewvale	Part of Council Ownership and/or essential for addressing pinch points.
	22RP813769	Drewvale	Part of Council Ownership and/or essential for addressing pinch points.
	1RP813768	Drewvale	Part of Council Ownership and/or essential for addressing pinch points.
	3RP813768	Drewvale	Part of Council Ownership and/or essential for addressing pinch points.
	15RP813768	Drewvale	Part of Council Ownership and/or essential for addressing pinch points.
	29RP813769	Drewvale	Part of Council Ownership and/or essential for addressing pinch points.
	KRP853023	Drewvale	Part of Council Ownership and/or essential for addressing pinch points.
	KRP813769	Drewvale	Part of Council Ownership and/or essential for addressing pinch points.
	4RP813768	Drewvale	Part of Council Ownership and/or essential for addressing pinch points.
	5RP813768	Drewvale	Part of Council Ownership and/or essential for addressing pinch points.
	23RP813769	Drewvale	Part of Council Ownership and/or essential for addressing pinch points.
	27RP813769	Drewvale	Part of Council Ownership and/or essential for addressing pinch points.
	ARP131493	Drewvale	Part of Council Ownership and/or essential for addressing pinch points.
	CRP148196	Drewvale	Part of Council Ownership and/or essential for addressing pinch points.
	2RP813768	Drewvale	Part of Council Ownership and/or essential for addressing pinch points.
	17RP813769	Drewvale	Part of Council Ownership and/or essential for addressing pinch points.
	FRP813768	Drewvale	Part of Council Ownership and/or essential for addressing pinch points.
	JRP813769	Drewvale	Part of Council Ownership and/or essential for addressing pinch points.
	7RP813769	Drewvale	Part of Council Ownership and/or essential for addressing pinch points.
	25RP813769	Drewvale	Part of Council Ownership and/or essential for addressing pinch points.
	26RP813769	Drewvale	Part of Council Ownership and/or essential for addressing pinch points.
	DRP184742	Drewvale	Part of Council Ownership and/or essential for addressing pinch points.

Parcels OUT	Parcels IN	Description of the Area	Reason For Changes
	DRP184742	Drewvale	Part of Council Ownership and/or essential for addressing pinch points.
	ERP813768	Drewvale	Part of Council Ownership and/or essential for addressing pinch points.
	13RP813768	Drewvale	Part of Council Ownership and/or essential for addressing pinch points.
	14RP813768	Drewvale	Part of Council Ownership and/or essential for addressing pinch points.
	19RP813770	Drewvale	Part of Council Ownership and/or essential for addressing pinch points.
	6RP813769	Drewvale	Part of Council Ownership and/or essential for addressing pinch points.
	8RP813770	Drewvale	Part of Council Ownership and/or essential for addressing pinch points.
	16RP813768	Drewvale	Part of Council Ownership and/or essential for addressing pinch points.
	JRP853022	Drewvale	Part of Council Ownership and/or essential for addressing pinch points.
	DRP853710	Drewvale	Part of Council Ownership and/or essential for addressing pinch points.
	PRP813834	Drewvale	Part of Council Ownership and/or essential for addressing pinch points.
	21RP813769	Drewvale	Part of Council Ownership and/or essential for addressing pinch points.
	28RP813769	Drewvale	Part of Council Ownership and/or essential for addressing pinch points.
	GRP813768	Drewvale	Part of Council Ownership and/or essential for addressing pinch points.
	CRP148196	Drewvale	Part of Council Ownership and/or essential for addressing pinch points.
	BRP148196	Drewvale	Part of Council Ownership and/or essential for addressing pinch points.
	DRP856103	Drewvale	Part of Council Ownership and/or essential for addressing pinch points.
114SP196912		Redbank Plains	Conflict with Urban Footprint or Planning Scheme
BRP888453		Redbank Plains	Conflict with Urban Footprint or Planning Scheme
89RP218485		Redbank Plains	Conflict with Urban Footprint or Planning Scheme
BRP125434		Redbank Plains	Conflict with Urban Footprint or Planning Scheme
230SP196913		White Rock	Conflict with Urban Footprint or Planning Scheme
189SP199797		White Rock	Conflict with Urban Footprint or Planning Scheme
ARP888454		Redbank Plains	Conflict with Urban Footprint or Planning Scheme
749SP189044		Spring Mountain (referred to as the "Tail")	Conflict with Urban Footprint or Planning Scheme
750SP189053		Spring Mountain (referred to as the "Tail")	Springfield Land Corporation submission
168M3175		Purga	Conflict with Urban Footprint or Planning Scheme
2RP121242		Purga	Conflict with Urban Footprint or Planning Scheme
1RP30147		Purga	Conflict with Urban Footprint or Planning Scheme
229RP907218		Deebing Heights	Conflict with Urban Footprint or Planning Scheme
208CH31136		Deebing Heights	Conflict with Urban Footprint or Planning Scheme
209CH31136		Deebing Heights	Conflict with Urban Footprint or Planning Scheme
251RP880288		Deebing Heights	Conflict with Urban Footprint or Planning Scheme

Parcels OUT	Parcels IN	Description of the Area	Reason For Changes
200S3157		Deebing Heights	Conflict with Urban Footprint or Planning Scheme
203S3157		Deebing Heights	Conflict with Urban Footprint or Planning Scheme
228RP907218		Deebing Heights	Conflict with Urban Footprint or Planning Scheme
202S3157		Deebing Heights	Conflict with Urban Footprint or Planning Scheme
194SP193445		Deebing Heights	Conflict with Urban Footprint or Planning Scheme
199SP193445		Deebing Heights	Conflict with Urban Footprint or Planning Scheme
201SP193445		Deebing Heights	Conflict with Urban Footprint or Planning Scheme
250RP880288		Deebing Heights	Conflict with Urban Footprint or Planning Scheme
ARP111574		Deebing Heights	Conflict with Urban Footprint or Planning Scheme
254SP123299		Deebing Heights	Conflict with Urban Footprint or Planning Scheme
238SP138825		Deebing Heights	Conflict with Urban Footprint or Planning Scheme
	2RP40406	Karawatha	Part of BCC proposal for reserves or under BCC ownership
	BSP147424	Karawatha	Part of BCC proposal for reserves or under BCC ownership
	1RP85515	Karawatha	Part of BCC proposal for reserves or under BCC ownership
	23RP37882	Karawatha	Part of BCC proposal for reserves or under BCC ownership
	11RP38154	Karawatha	Part of BCC proposal for reserves or under BCC ownership
	25RP38155	Karawatha	Part of BCC proposal for reserves or under BCC ownership
	15RP37882	Karawatha	Part of BCC proposal for reserves or under BCC ownership
	1RP161003	Karawatha	Part of BCC proposal for reserves or under BCC ownership
	2RP161003	Karawatha	Part of BCC proposal for reserves or under BCC ownership
	1RP37881	Karawatha	Part of BCC proposal for reserves or under BCC ownership
	12RP38154	Karawatha	Part of BCC proposal for reserves or under BCC ownership
	2RP85515	Karawatha	Part of BCC proposal for reserves or under BCC ownership
	24RP38155	Karawatha	Part of BCC proposal for reserves or under BCC ownership
	26RP38155	Karawatha	Part of BCC proposal for reserves or under BCC ownership
	22RP37882	Karawatha	Part of BCC proposal for reserves or under BCC ownership
	1RP40406	Karawatha	Part of BCC proposal for reserves or under BCC ownership
	ASP147423	Karawatha	Part of BCC proposal for reserves or under BCC ownership
	742SP189007	Springfield Lakes	ICC advice, to include the park land
	915SP160077	Springfield Lakes	ICC advice, part of an Environmental Habitat
1SP119360		Greenbank	Sporting fields
2SP119360		Greenbank	Sporting fields
179CH3199		Goolman	ICC advice
49S312118		New Beith	Lot incorrectly split in half; has committed development