



NRW Forest Products Pocket Facts 2007



Queensland **the Smart State**



NRW Forest Products
Queensland Government

Department of **Natural Resources** and Water

NRW Forest Products

– responsibly managing Queensland's natural forest and quarry resources



Who we are

NRW Forest Products is a commercially focused business unit within the Department of Natural Resources and Water. The unit was formed on 1 April 2006 following the Queensland Government's reforms to DPI Forestry – moves designed to streamline and enhance commercial forest management in the state.

What we do

Our business goal is to maximise financial returns to the state from the sale of natural forest products and quarry materials, within social, environmental and cultural expectations.

Our core business activities are managing the sale of native forest timber and quarry materials from state forests, timber reserves and other state-controlled lands.

Our primary customers are sawmillers and quarry operators.

We work in partnership with industry, landholders, the community and across government to ensure Queensland's natural forest and quarry resources are used effectively and managed responsibly now and for the future.

Performance summary

Product	2004-05 ⁽¹⁾	2005-06 ⁽²⁾	2006-07
Hardwood sawlogs	125,312 m ³	146,514 m ³	156,459 m ³
Cypress sawlogs	138,149 m ³	160,504 m ³	136,837 m ³
Other pine sawlogs	650 m ³	0 m ³	0 m ³
Railway sleepers and like timber	0 m ³	28 m ³	0 m ³
Landscaping and fencing timber	10,642 m ³	13,601 m ³	25,076 m ³
Mining timber	0 m ³	0 m ³	169 m ³
Girders, corbels, piles and sills	2,992 m ³	1,998 m ³	5,409 m ³
Hardwood poles	9,277 m ³	9,530 m ³	10,107 m ³
Other hardwood round timber	4,772 m ³	4,541 m ³	5,214 m ³
Sandlewood	378 m ³	159 m ³	142 m ³
Total log timber	292,172 m³	336,875 m³	339,430 m³
Total quarry material	2,691,092 m³	2,943,330 m³	3,191,684 m³
Operating surplus	N/A	\$4.802M	\$6.026M
EPA harvesting audits	52	75	77
Corrective Action Requirements (CARs) ⁽³⁾	64	92	71
CARs/EPA audit ratio	1.2	1.2	.92

(1) Trading as DPI Forestry

(2) Combined figures for nine months trading as DPI Forestry and three months as NRMW Forest Products

(3) A notice issued by EPA for a non-conformance of harvesting practice against the the *Code of Practice for Native Forest Timber Production 2007*

Our key achievements for 2006-07

- In our first full year of operation as a new business unit, NRW Forest Products recorded an operating surplus of \$6.026 million - 25 per cent higher than the previous year's result.
- Following an independent audit of our forest management system during the year, we retained our certification to the *Australian Forestry Standard (AFS) AS 4708-2007*. The AFS is based on internationally recognised criteria for forest management and timber production from environmental, social and cultural perspectives.
- During the year, the Environmental Protection Agency (EPA) conducted 77 audits of our harvesting operations under its *Code of Practice for Native Forest Timber Production 2002*. No material or serious impacts on native forest areas were identified as a result of harvesting operations. All Corrective Action Requirements issued by EPA during the audits are being addressed to further improve future compliance with the code.



- The safety of the state's forest workers has been enhanced through the implementation of the Department of Employment and Industrial Relations' new safety code, *Forest Harvesting Code of Practice 2007*.



- Our Atherton Overseer Arthur Johnson was presented with an Australia Day Achievement Award in recognition of his lifetime of service, dedication and contributions to commercial forestry operations in North Queensland.
- The quick and decisive actions of our staff during a major wildfire at Barakula and the subsequent salvage operation of the burnt timber minimised financial and resource losses to the state. The team involved received a High Commendation at the 2007 NRW Excellence Awards.
- A joint agency fire management plan was signed between NRW Forest Products, Queensland Parks and Wildlife Service and Forestry Plantations Queensland. The plan addresses agency cooperation in all aspects of fire management on state forests.



Our products

Native hardwoods

Our key commercial hardwood species include spotted gum, ironbark, grey gum and sandalwood.

We sell around 150 000 cubic metres of native forest hardwood to timber processors each year. This represents around 45 per cent of Queensland's native hardwood timber removals.

Our native forest hardwoods are managed responsibly using stringent environmental guidelines. They are selectively harvested, leaving behind a viable forest with habitat trees and protective buffer strips around streams.

Queensland's hardwood timbers are valued for their strength, durability and appearance. They are used for construction, framing, cladding, flooring, decking, fencing, bridges, wharfs, power and light poles, railway sleepers and landscaping as well as for durable outdoor joinery and furniture.

One of our more unique hardwood products, sandalwood, is exported and used for making incense and joss sticks.



Cypress pine

Cypress pine is a key commercial species that we manage for timber production on state-owned land. We sell around 140 000 cubic metres of cypress pine to timber processors each year. This represents around 75 per cent of Queensland's total cypress timber removals.



Cypress pine is prized for its strength and durability, light-brown knotty appearance and natural resistance to pests and decay.

Our cypress is used for construction, framing, cladding, flooring, decking and fencing.

Quarry material

We supply around eight per cent of the state's quarry material requirements, providing vital supplies for Queensland's infrastructure development and maintenance projects such as roads, railways and dams.

Of the approximately 3.2 million cubic metres of quarry material we supply each year, around 35 per cent comes from state forests in the Beerburrum area north of Brisbane. The remainder is extracted from quarries on state-controlled lands in central, north and western Queensland.



Our forest management credentials

Our world-class forest management system is independently certified to comply with the internationally recognised *Australian Forestry Standard (AFS) AS 4708–2007*.

AFS certification verifies that we conduct our operations in a professional and environmentally responsible manner which recognises and supports biodiversity, soil and water quality and the cultural and spiritual values associated with the land.

The standard has international status via mutual recognition with other similar national certification schemes granted by the Program for the Endorsement of Forest Certification Schemes (PEFC) – the world’s global umbrella forest certification body.

Our AFS certification provides our timber processing and manufacturing customers with the opportunity to achieve chain-of-custody certification. They can then eco-label their products with the assurance to consumers that the forest products they are buying have been sourced from responsibly managed forests.



AFS/01-21-07

www.forestrystandard.org.au



PEFC/21-23-07

www.pefc.org





DNV

DET NORSKE VERITAS
AUSTRALIAN FORESTRY STANDARD
DNV CERTIFICATION PTY LTD

Certificate No.
02017-2006-ANZ-VYL-133-ANZ

This certifies that

THE FORESTRY MANAGEMENT SYSTEM

of

NRMW FOREST PRODUCTS

is in conformity with the standard **Forest Standard**

AS/NZS 4999

This Certificate is issued for the following production process(es):

Commercial harvest and removal of native forest products and related activities on the NRMW Forest Products Defined Forest Areas designated for this purpose.

Issue date:

July, April 2, 2006

This certificate is valid until:

March 31, 2007

DNV Certification Pty Ltd.
23 042 611 114 147


Representative

IAS-ANZ



Issue/Valid Until Date: April 2, 2006

Accreditation by the Joint Accreditation System
of Australia and New Zealand (JAS) No. P 1000/107-01

DNV is a registered trademark of Det Norske Veritas. The name DNV is a registered trademark of Det Norske Veritas.

Where we are

Our dedicated staff operate from 23 centres covering four forest management areas (FMAs) across Queensland.

To contact us

NRW Forest Products Central Office

Level 10, Forestry House, 160 Mary Street

GPO Box 2454, Brisbane Q 4001

Telephone: (07) 3234 1890 Fax: (07) 3234 0103

Cypress Forest Management Area

Level 3, 30 Marble Street, PO Box 589, Dalby Q 4405

Telephone: (07) 4672 4800 Fax: (07) 4672 4850

North Forest Management Area

Level 1, 83 Main Street, PO Box 1138, Atherton Q 4883

Telephone: (07) 4091 5200 Fax: (07) 4091 5211

South East Forest Management Area

28 Fraser Road, PO Box 1339, Gympie Q 4570

Telephone: (07) 5482 0856 Fax: (07) 5482 3430

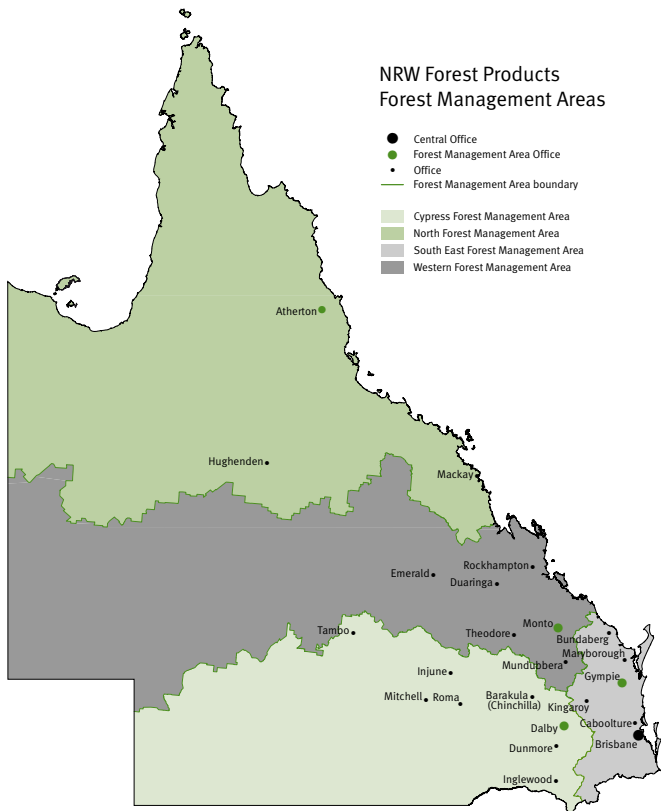
Western Forest Management Area

13 Rutherford Street, PO Box 219, Monto Q 4630

Telephone: (07) 4166 1433 Fax: (07) 4166 1871

All email enquiries to: forestproducts@nrw.qld.gov.au

NRW Forest Products Forest Management Areas





ISBN 978-1741727494



9 781741 727494

NRW Forest Products: Pocket Facts 2007

© State of Queensland (Department of Natural Resources and Water) 2007