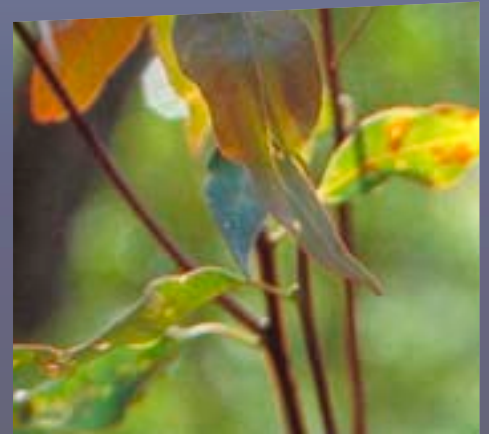


Annual Report  
**2009–2010**  
Annex

**Department of Environment and Resource Management**



## Contents

<b>Report on the administration of the <i>Nature Conservation Act 1992</i> . . . . .</b>	<b>3</b>
<b>Report on the administration of the <i>Marine Parks Act 2004</i> . . . . .</b>	<b>32</b>
<b>Report on the administration of the <i>Water Supply (Safety and Reliability) Act 2008</i> .</b>	<b>35</b>
<b>Queensland Heritage Council—Report . .</b>	<b>38</b>
<b>Newstead House—Board of Trustees Report . . . . .</b>	<b>41</b>
Newstead House financial statements. . . . .	44

---

Published by:  
Department of Environment and Resource Management  
GPO Box 2454  
Brisbane Qld 4001

The State of Queensland (Department of Environment and Resource Management) 2010

The department authorises the reproduction of textual material in this report, whole or in part and in any form, provided the appropriate acknowledgement is given. Please contact Communication Service if an alternative format is required.

Phone: 07 327 8311

Email: [enquiries@derm.qld.gov.au](mailto:enquiries@derm.qld.gov.au)

If you need to access this report in a language other than English, please call the Translating and Interpreting Service (TIS National) on 131 450 and ask them to telephone the department's Library Services on +61 7 3224 8412.

This publication is available in alternative formats (including large print and audiotape) on request for people with a vision impairment. Contact (07) 322 48412 or email [library@derm.qld.gov.au](mailto:library@derm.qld.gov.au).

Published September 2010

#29240

## Purpose of the Annex

Reports on the administration of three pieces of legislation administered by the Department of Environment and Resource Management (DERM) are provided in this annex to the department's annual report 2009-2010. It has been prepared to allow the Queensland Parliament – through the Minister for Natural Resources, Mines and Energy and Minister for Trade, and the Minister for Climate Change and Sustainability – to assess the performance of DERM in relation to administration of this legislation.

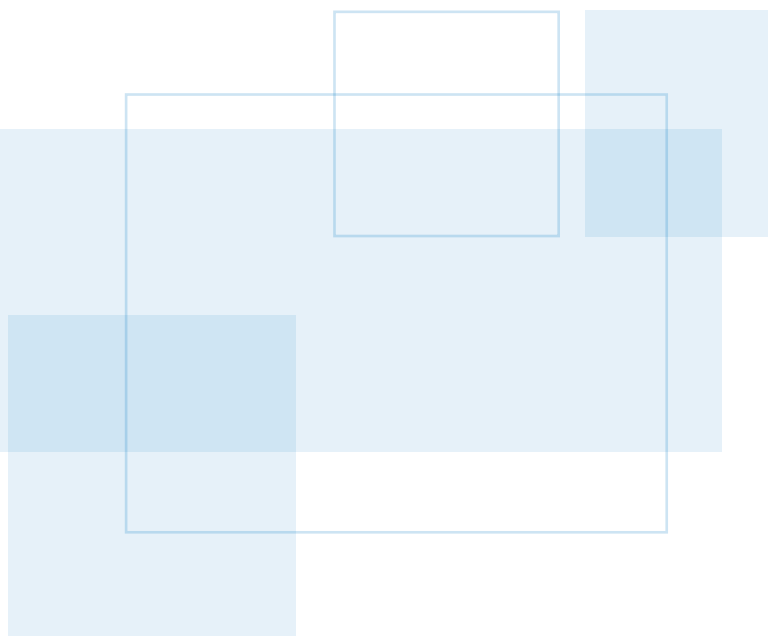
A report on the administration of the *Environmental Protection Act 1994* will be tabled in the Legislative Assembly by the Minister for Climate Change and Sustainability within the timeframes specified within this Legislation.

The annex also includes the annual report for the Queensland Heritage Council and the annual report and financial statements for Newstead House (prepared by the Board of Trustees).

This publication can be accessed and downloaded from the DERM website or alternatively hard copies of the document can be obtained by emailing [strategicreporting@derm.qld.gov.au](mailto:strategicreporting@derm.qld.gov.au).

# Report on the administration of *Nature Conservation Act 1992*

For the reporting period  
1 July 2009 – 30 June 2010



## Introduction

The *Nature Conservation Act 1992* (NC Act) aims to achieve an integrated and comprehensive approach to conserving nature. It provides a legislative basis for research, community education, dedicating, declaring and managing protected areas, and protecting native wildlife and its habitat. The NC Act allows for the ecologically sustainable use of wildlife and protected areas, and recognises the interests of Aboriginal and Torres Strait Islander people in nature and their co-operative involvement in its conservation. The roles of landholders and the community are recognised and the Act encourages their involvement in conserving nature through voluntary agreements and sustainable use of land and natural resources.

As at 30 June 2010 the only section of the NC Act not proclaimed was section 93, which deals with the rights of Aboriginal and Torres Strait Islander people to take use or keep protected wildlife on lands outside the protected area estate, under Aboriginal tradition or Islander custom.

The NC Act provides for proclamation of subordinate legislation in the form of regulations and conservation plans. These are detailed in this report.

The chief executive officer of the Department of Environment and Resource Management (DERM) is responsible for administering the legislation, however where appropriate, certain powers of the chief executive are delegated to specified officials of DERM. Delegations are reviewed periodically.

## Funding

In 2009–2010, \$164.03 million (including an operating budget of \$134 390 million and capital budget of \$30.7 million) was allocated in the department's budget to administer the NC Act. These funds were used to acquire and manage protected areas, undertake research, direct sustainable wildlife use, educate the community and encourage community nature conservation.

The total funding above includes capital, equity and depreciation, but excludes allocations to the Queensland Recreation Areas Management Board, the Great Barrier Reef Marine Park Authority and the Wet Tropics Management Authority.

## List of legislation and subordinate legislation

- Nature Conservation (Administration) Regulation 2006
- Nature Conservation (Dugong) Conservation Plan 1999
- Nature Conservation (Estuarine Crocodile) Conservation Plan 2007
- Nature Conservation (Forest Reserves) Regulation 2000
- Nature Conservation (Koala) Conservation Plan 2006
- Nature Conservation (Macropod) Conservation Plan 2005
- Nature Conservation (Macropod Harvest Period 2010) Notice 2009
- Nature Conservation (Protected Areas Management) Regulation 2006
- Nature Conservation (Protected Areas) Regulation 1994
- Nature Conservation (Protected Plants) Conservation Plan 2000
- Nature Conservation (Protected Plants Harvest Period) Notice 2010
- Nature Conservation (Whales and Dolphins) Conservation Plan 1997
- Nature Conservation (Wildlife Management) Regulation 2006
- Nature Conservation (Wildlife) Regulation 2006

## Amendments

### ***Nature Conservation Act 1992***

The *Nature Conservation Act 1992* was amended twice in 2009–2010. The first amendment was made through the *Sustainable Planning Act 2009*, assented to on 22 September 2009. The amendment updated references to the former *Integrated Planning Act 1997* with references to the new *Sustainable Planning Act 2009*.

The second amendment was made by the *South-East Queensland Water (Distribution and Retail Restructuring) and Other Legislation Amendment Act 2010*, assented to on 23 May 2010. This amendment clarified provisions that prohibit mining-related activities with reference to national park (Cape York Peninsula Aboriginal Land).

## Regulations

Six regulations operate under the *Nature Conservation Act 1992*:

- Nature Conservation (Administration) Regulation 2006
- Nature Conservation (Forest Reserves) Regulation 2000
- Nature Conservation (Protected Areas Management) Regulation 2006
- Nature Conservation (Protected Areas) Regulation 1994
- Nature Conservation (Wildlife Management) Regulation 2006
- Nature Conservation (Wildlife) Regulation 2006.

### Nature Conservation (Administration) Regulation 2006

The regulation contains the administrative matters that apply to the Nature Conservation (Protected Areas Management) Regulation 2006, the Nature Conservation (Wildlife Management) Regulation 2006 and the conservation plans made under the Act. Parts of the regulation cover:

- administrative matters relating to the grant, amendment, suspension, cancellation, surrender and replacement of relevant authorities (permits, licences and written permissions)
- the requirements applying to carrying out activities under a relevant authority
- review and appeal of particular decisions
- the procedures applying after a thing is seized
- requirements for records required to be kept
- requirements for returns of operations
- requirements for commercial activity agreements
- the fees that are payable under the Act
- additional general provisions including how demerit points are accumulated and the period for which particular documents must be kept under the Act.

The Nature Conservation (Administration) Regulation 2006 was amended twice during 2009–2010.

It was amended by the Sustainable Planning Regulation 2009, notified in the Government Gazette on 27 November 2009. The amendment updated references to the former *Integrated Planning Act 1997* with references to the *Sustainable Planning Act 2009*.

It was again amended by the Nature Conservation Legislation Amendment Regulation (No. 1) 2010; notified in the Government Gazette on 21 May 2010, which amended references to the ‘rare’ class of wildlife.

### Nature Conservation (Forest Reserves) Regulation 2000

The Nature Conservation (Forest Reserves) Regulation 2000 allows for the dedication of areas within State forests, timber reserves or *Land Act 1994* reserves as forest reserves. This is an interim measure to assist in the dedication of these areas as protected areas.

The Nature Conservation (Forest Reserves) Regulation 2000 was amended six times in 2009–2010. All of the amendments updated the Schedule (Forest Reserves) to reflect new dedications and the transfer of current forest reserves to national park or other tenures. The amendments were made through the Forestry and Nature Conservation Legislation Amendment Regulation (No. 3) 2009, notified in the Government Gazette on 31 July 2009; the Forestry and Nature Conservation Legislation Amendment Regulation (No. 4) 2009, notified in the Government Gazette on 25 September 2009; the Nature Conservation Legislation Amendment Regulation (No. 1) 2009, notified in the Government Gazette on 13 November 2009, the Forestry and Nature Conservation Legislation Amendment Regulation (No. 6) 2009, notified in the Government Gazette on 11 December 2009; the Forestry and Nature Conservation Legislation Amendment Regulation (No. 1) 2010, notified in the Government Gazette on 26 March 2010, and the Forestry and Nature Conservation Legislation Amendment Regulation (No. 2) 2010, notified in the Government Gazette on 4 June 2010.

### Nature Conservation (Protected Areas Management) Regulation 2006

The Nature Conservation (Protected Areas Management) Regulation 2006 provides for the management and use of Queensland’s protected area estate.

Parts of the Regulation cover:

- the trustees of particular conservation parks and resources reserves
- permitting certain uses of protected areas
- restrictions on the grant of particular protected area authorities
- the activities authorised under each protected area authority
- offences in protected areas
- taking, using, keeping or interfering with the cultural or natural resources of a protected area
- providing for the seizure of particular things in protected areas.

Schedules cover many details including powers of trustees, conditions for taking fish in national parks and minimum flying heights over some National Park areas.

The Nature Conservation (Protected Areas Management) Regulation 2006 was amended six times in 2009–2010. It was amended by the Nature Conservation (Protected Areas Management) Amendment Regulation (No. 4) 2009, notified in the Government Gazette on 3 July 2009. This amendment updated Schedule 3 (Permitted uses in prescribed national parks) to include reference to a communication use in part of Kroombit Tops National Park.

It was again amended by the Transport Operations (Road Use Management—Road Rules) Regulation 2009, notified in the Government Gazette on 11 September 2009, to require drivers of motor vehicles (except a bus or taxi) in a protected area to comply with the Queensland Road Rules section 265(3).

It was again amended by the Nature Conservation (Protected Areas Management) Amendment Regulation (No. 5) 2009, notified in the Government Gazette on 20 November 2009, updating Schedule 3 (Permitted uses in prescribed national parks) to include reference to a communication use in part of Wongi National Park.

A further amendment was made by the Nature Conservation (Protected Areas Management) Amendment Regulation (No. 6) 2009, notified in the Government Gazette on 4 December 2009, updating Schedule 3 (Permitted uses in prescribed national parks) to include reference to the construction, maintenance and use of hydrants and an effluent reuse pipeline in part of the Burrum Coast National Park.

It was again amended by the Environment and Resource Management and Other Legislation Amendment Regulation (No. 1) 2010, notified in the Government Gazette on 19 February 2010, updating reference in Schedule 1 to Dalby Regional Council to reflect the new council name 'Western Downs Regional Council'.

The final amendment was made through the Nature Conservation Legislation Amendment Regulation (No. 1) 2010, notified in the Government Gazette on 21 May 2010 which amended references to the 'rare' class of wildlife in order to reflect changes to the Nature Conservation (Wildlife) Regulation 2006.

## Nature Conservation (Protected Areas) Regulation 1994

The Nature Conservation (Protected Areas) Regulation 1994 contains schedules listing the names, former descriptions, and current descriptions of State land declared as protected areas under the *Nature Conservation Act 1992*. Schedule 1 covers national parks (scientific), schedule 2 national parks, schedule 3 conservation parks, schedule 4 resources reserves, schedule 5 nature refuges and schedule 6 coordinated conservation areas.

The Regulation was amended 15 times during 2009–2010 to update these schedules of protected areas. The amendments were made through the following regulations:

- Forestry and Nature Conservation Legislation Amendment Regulation (No. 3) 2009, notified in the Government Gazette on 31 July 2009
- Nature Conservation (Protected Areas) Amendment Regulation (No. 2) 2009 notified in the Government Gazette on 4 September 2009
- Forestry and Nature Conservation Legislation Amendment Regulation (No. 4) 2009 notified in the Government Gazette on 25 September 2009
- Forestry and Nature Conservation Legislation Amendment Regulation (No. 5) 2009 notified in the Government Gazette on 9 October 2009
- Nature Conservation (Protected Areas) Amendment Regulation (No. 3) 2009 notified in the Government Gazette on 30 October 2009
- Nature Conservation Legislation Amendment Regulation (No. 1) 2009 notified in the Government Gazette on 13 November 2009
- Nature Conservation (Protected Areas) Amendment Regulation (No. 4) 2009 notified in the Government Gazette on 4 December 2009
- Forestry and Nature Conservation Legislation Amendment Regulation (No. 6) 2009 notified in the Government Gazette on 11 December 2009
- Nature Conservation (Protected Areas) Amendment Regulation (No. 1) 2010 notified in the Government Gazette on 12 February 2010
- Nature Conservation (Protected Areas) Amendment Regulation (No. 2) 2010 notified in the Government Gazette on 19 February 2010
- Forestry and Nature Conservation Legislation Amendment Regulation (No. 1) 2010 notified in the Government Gazette on 26 March 2010
- Nature Conservation (Protected Areas) Amendment Regulation (No. 3) 2010 notified in the Government Gazette on 7 May 2010

- Nature Conservation Legislation Amendment Regulation (No. 1) 2010 notified in the Government Gazette on 21 May 2010
- Nature Conservation (Protected Areas) Amendment Regulation (No. 4) 2010, notified in the Government Gazette on 28 May 2010
- Forestry and Nature Conservation Legislation Amendment Regulation (No. 2) 2010, notified in the Government Gazette on 4 June 2010.

## Nature Conservation (Wildlife Management) Regulation 2006

The regulation provides for the management of wildlife including the taking, keeping and using of wildlife including protected plants. Parts of the regulation cover:

- restrictions on the grant of particular wildlife authorities
- stating the activities authorised under each wildlife authority
- authorising particular taking, keeping, using and moving of wildlife
- prohibited activities relating to wildlife
- the seizure of particular things for the protection of native wildlife
- the supply or approval of tags for attaching to wildlife
- export agreements for the movement of any live protected native mammal to another country
- the conservation value payable for particular wildlife.

The Nature Conservation (Wildlife Management) Regulation 2006 was amended twice during 2009–2010. It was amended by the Nature Conservation Legislation Amendment Regulation (No. 1) 2010, notified in the Government Gazette on 21 May 2010, which amended references to the ‘rare’ class of wildlife in order to reflect changes to the Nature Conservation (Wildlife) Regulation 2006.

The regulation was again amended by the *Transport and Other Legislation Amendment Act (No. 2) 2010*, assented to on 23 May 2010, to update various terms related to Queensland Rail and Government Owned Corporations.

## Nature Conservation (Wildlife) Regulation 2006

The Nature Conservation (Wildlife) Regulation 2006 provides for the management of wildlife in Queensland by declaring classes of wildlife and the management intent for that wildlife. The Nature Conservation (Wildlife) Regulation 2006 was amended four times during 2009–2010.

The Nature Conservation (Wildlife) Amendment Regulation (No. 1) 2009, notified in the Government Gazette on 20 November 2009, made several amendments including scientific names, and lists of extinct in the wild wildlife, endangered wildlife, and vulnerable wildlife.

This regulation was then amended by the Forestry and Nature Conservation Legislation Amendment Regulation (No. 6) 2009, notified in the Government Gazette on 11 December 2009, to amend the list of vulnerable wildlife.

It was then amended by the Nature Conservation (Wildlife) Amendment Regulation (No. 1) 2010, notified in the Government Gazette on 21 May 2010, which changed several schedules and lists of scientific names and common names.

It was also amended by the Nature Conservation Legislation Amendment Regulation (No. 1) 2010, notified in the Government Gazette on 21 May 2010, to reclassify rare species and achieve greater consistency with international species classification practices.

## Protected areas

The NC Act provides for areas to be dedicated or declared in order to conserve nature. Table A details the changes made to protected areas in 2009–2010.

## Permits, authorities

The Nature Conservation (Protected Areas Management) Regulation 2006 provides for activities to be undertaken on protected areas by permit, authority or agreement for varying periods. The Nature Conservation (Administration) Regulation 2006 outlines the administrative matters relating to the grant, amendment, suspension, cancellation, surrender and replacement of relevant authorities (permits, licences and written permissions) and the requirements applying to carrying out activities under a relevant authority provided for by the Nature Conservation (Protected Areas Management) Regulation 2006.

A summary of permits, authorities and agreements granted, suspended or cancelled, and applications refused in 2009–2010 and related information is given in table B.

## Leases and other authorities

Sections 34–38 of the NC Act deal with the granting of authorities to use national parks (scientific), national parks, national parks (recovery), conservation parks, and resources reserves. This includes granting authorities that cover leases issued under the *Land Act 1994* and authorised under the *National Parks and Wildlife Act 1974* before the enactment of the NC Act.

Under the provisions of the legislation, leases and authorities can, under certain circumstances, be issued for reasons that include but are not restricted to grazing, tourism, communications and water extraction. A register is maintained as required under the NC Act.

## Forest reserves

There were actions undertaken to continue the transfer of Forest Reserves to the protected area estate and these are detailed in Table C.

## Trustees

Section 31 of the Act provides that a conservation park or resources reserve may be placed under the management of trustees. Trustees are listed in schedules 1 and 2 of the Nature Conservation (Protected Areas Management) Regulation 2006.

## Commercial Activity Agreements

The Nature Conservation (Protected Areas Management) Regulation 2006 provides for activities to be undertaken on protected areas by permit, authority or agreement for varying periods. Part 3 of the Nature Conservation (Administration) Regulation 2006 outlines the process for consideration of Commercial Activity Agreements for activities to be undertaken on protected areas. Commercial Activity Agreements over protected areas in force during 2009–2010 are listed in Table D.

## Harvest period notices

The chief executive approved the Nature Conservation (Protected Plants Harvest Period) Notice 2010 on 12 March 2010 and advertised the notice in the government gazette on 19 March 2010. This notice commenced on 1 April 2010 and will expire on 31 March 2011.

The chief executive approved the Nature Conservation (Macropod Harvest Period 2010) Notice 2009 on 12 December 2009 and advertised the notice in the government gazette on 18 December 2009. This notice commenced on 1 January 2010 and will expire on 31 December 2010.

## Conservation Plans

Sections 112–119 of the NC Act set out the process for preparing conservation plans, including opportunities for public consultation. The status of conservation plans at 30 June 2010 is given in Table F.

## Management plans

Sections 112–119 of the NC Act outlines the process of developing management plans for protected areas. The Minister must give public notice and invite submissions on the plans.

Management plans are statutory documents that provide an important source of clear management direction and priority actions for DERM managed areas. Management plans for protected areas are reviewed every 10 years.

Currently 85 protected area management plans covering 103 protected areas have been approved by the Governor in Council. Ten draft protected area management plans were released for public comment in 2009–2010. The Byfield Area management plan, covering Byfield National Park, Byfield Conservation Park, Byfield State Forest (managed by Queensland Parks and Wildlife Service), the Departmental and Official Purposes Reserve at Stockyard Point, Corio Bay and beaches of the State marine park, was approved by the Governor in Council May 2010.

<b>Draft Protected Area Management Plans released for public comment 2009-2010</b>
Auburn River National Park
Blackwood National Park
Dalrymple National Park
Djilgarin and Jalum Conservation Parks
Lamington National Park
Mount Bauple National Park (Scientific)
Narrien Range National Park
Porcupine Gorge and Moorrinya National Parks
Tarong National Park
White Blow Conservation Park

<b>Approved Protected Area Management Plans as at 30 June 2010</b>
Auburn River National Park
Bakers Creek Conservation Park
Barnard Island Group National Park
Blackwood National Park
Bowling Green Bay National Park
Brook Island and Goold Island National Parks
Buckleys Hole Conservation Park
Bullock Creek Conservation Park
Burleigh Head National Park
Bushy Island National Park <sup>Note 1</sup>
Byfield Area
Cape Hillsborough and Pioneer Peaks National Parks
Capricorn Coast National Park
Capricornia Cays National Park and Capricornia Cays National Park (Scientific)
Carbrook Wetlands Conservation Park Serpentine Creek Conservation Park
Carnarvon National Park Management Plan
Coalston Lakes National Park
Cressbrook Conservation Park
Culgoa Floodplain National Park
Currawinya National Park
D'Aguilar National Park
Dalrymple National Park
Dipperu National Park
Djilgarin Conservation Park

<b>Approved Protected Area Management Plans as at 30 June 2010</b>
Dwyers Scrub Conservation Park
Epping Forest National Park (Scientific)
Family Islands National Park
Forest Den National Park
Frankland Group National Park
Glass House Mountains National Park
Great Sandy Conservation Park
Green Island Recreation Area incorporating Green Island National Park, part of the Cairns Marine Park (State) and part of the Great Barrier Reef Marine Park (Commonwealth) and Green Island National Park Management Plans
Hinchinbrook Island National Park
Hope Islands National Park
Horseshoe Lagoon Conservation Park
Idalia National Park
Indooroopilly Island Conservation Park
Jalum Conservation Park
Keppel Bay Islands National Park (Scientific)
King Island Conservation Park
Kondalilla National Park
Littabella National Park
Lochern National Park
Mariala National Park
Maroochy River Conservation Park
Mazeppa National Park
Michaelmas and Upolu Cays National Park
Minerva Hills National Park
Mooloolah River National Park
Moorrinya National Park
Moreton Island National Park
Mount Aberdeen National Park
Mount Bauple National Park (Scientific)
Mount Blarney Conservation Park
Mount Coolum National Park
Mount Hector Conservation Park
Mount Martin National Park
Mount Ossa National Park
Mount Scoria Conservation Park
Narrien Range National Park

Approved Protected Area Management Plans as at 30 June 2010
Nicoll Scrub National Park
Noosa National Park
Nymph Island National Park
Orpheus Island National Park
Pipeclay National Park
Poona National Park
Porcupine Gorge National Park
Protected areas in the Agnes Water/1770 area
Reliance Creek National Park
Rocky Islets National Park
Rundle Range National Park and Rundle Range Resources Reserve
Sheep Station Creek Conservation Park
Southwood National Park
Tarong National Park
Taunton National Park (Scientific)
Three Islands National Park
Tregole National Park
Triunia National Park
Turtle Group National Park
Two Islands National Park
Undara Volcanic and Forty Mile Scrub National Parks
Venman Bushland National Park
Welford National Park
White Blow Conservation Park
Wondul Range National Park

Note 1: Bushy Island National Park management plan was approved by the Governor in Council on 17 September 1998. Bushy Island National Park was amalgamated in the South Cumberland Islands National Park on 23 October 1998. The Nature Conservation Regulation s111 does not provide for the continuation of a management plan for only a part of a protected area. Therefore the approved management plan has no standing.

## Declarations

Predominantly white humpback whales including “Migaloo”, a white humpback whale, were declared whales of special interest under the *Nature Conservation (Whales and Dolphins) Conservation Plan 1997*. Declarations were made to protect these whales from harassment and in the interests of public safety. A declaration increases the area of restriction around these whales from 300m to 500m for vessels and 1000ft to 2000ft (304m and 608m) for fixed-wing aircraft. It also increases the maximum penalty for an offence from \$12 000 to \$16 500.

## Conservation agreements

Provision is made under Section 45 of the Act for the State to enter into conservation agreements with landholders to help conserve land and wildlife. Table G lists the conservation agreements (nature refuges) gazetted during 2009–2010.

## Critical habitat and areas of major interest

No critical habitat or area of major interest were determined during the year.

## Interim conservation orders

No interim conservation orders were issued under Sections 102–109 of the NC Act during 2009–2010.

## Licences, permits and authorities

Licences, permits and authorities are required for the taking and use of protected wildlife. This ensures that such use is ecologically sustainable and wild populations are protected. Maximum duration of permits varies from two months to five years.

Summaries of licences, permits and authorities granted, not issued, suspended or cancelled for the taking and use of wildlife are set out in tables H and I.

Scientific purposes permits were issued to research and assessment organisations including universities and government departments.

The department has maintained its policy to no longer issue damage mitigation permits for shooting flying foxes after 1 September 2008. The decision to stop issuing damage mitigation permits for shooting flying foxes followed a finding from the Animal Welfare Advisory Committee that shooting flying foxes for crop protection is inhumane.

## Records and returns

The Nature Conservation (Administration) Regulation 2006, Nature Conservation (Wildlife Management) Regulation 2006 and the Nature Conservation (Macropod) Conservation Plan 2005 require permit holders, agreement holders and licensees to keep record books, supply returns of operations and, where applicable, pay any outstanding fees.

Departmental staff actively monitors return records and requirements, noting inconsistencies in returns and payments. Follow-up action is undertaken and can include compliance investigations, review of permit, licence and agreement conditions and education programs to encourage licence, permit and agreement holders to act responsibly in carrying out activities under license, permit or agreement.

## Conservation officers

The Minister may appoint an employee of DERM; an officer of the public service; a police officer; or another appropriately qualified person to be a conservation officer. Conservation officers hold a range of investigation, compliance and enforcement powers supporting the implementation of the objectives of the NC Act.

## Offences and prosecutions

Enforcement of the NC Act is a major activity of the department, recognising the benefits of compliance actions for nature conservation in Queensland.

The litigation unit conducted four prosecutions within the 2009-2010 year. They resulted in fines totalling \$32 500. There was also the combined matter of DERM v McCracken (\$140 000, \$16 000 costs) and DERM v Bastenmeyer Group (\$10 000, \$4 000 costs) which dealt with the NC Act, EP Act, IPA and the Aboriginal Cultural Heritage Act. Departmental staff issued 685 penalty infringement notices (pins) during 2009-2010 against Nature Conservation acts and associated regulations.

# Information supporting the report on the administration of the *Nature Conservation Act* in 2009–10

**Table A - Changes to the status of protected areas during 2009–2010**

Type	Date	Action	Gazetted area (ha) (rounded)	Total number	Total area (ha)
<b>National Park (Scientific)</b>					
National park (scientific)	1/07/2009			8	52 221
Epping Forest NP(S)	11/12/2009	Plan Amendment	-410		
National park (scientific)	04/06/2010			8	51 811
<b>National Park</b>					
National park	1/07/2009			270	7 685 468
Conondale NP	31/07/2009	Extension	28668		
Endeavour River NP	31/07/2009	Extension	8.67		
Freshwater NP	31/07/2009	Extension	62.6		
Japoon NP	31/07/2009	Extension	40.5		
Mitchell-Alice Rivers NP	31/07/2009	Plan Amendment	1134.65		
Nerang NP	31/07/2009	New	1614.4		
Eurimbula NP	25/09/2009	Extension	9670		
Humboldt NP	25/09/2009	New	7660		
Tuchekoi NP	25/09/2009	New	371		
Wickham NP	25/09/2009	New	141		
Woondum NP	25/09/2009	New	4001		
Mitchell-Alice Rivers NP	30/10/2009	Amend	-38170		
Bingera NP	13/11/2009	Revoke	-38		
Ferntree Creek NP	13/11/2009	Revoke	-0.2837		
Great Sandy NP	13/11/2009	Revoke	-4.6633		
Homevale NP	13/11/2009	Revoke	-19.45		
Lakefield NP	13/11/2009	Revoke	-70.16		
Beeron NP	11/12/2009	New	7003		
Cape Hillsborough NP	11/12/2009	Extension	204.1		
Dryander NP	11/12/2009	Extension	20.701		
Girringun NP	11/12/2009	Extension	2810		
Mount Lewis NP	11/12/2009	Extension	27540		
Paluma Range NP	11/12/2009	Extension	6510		
White Mountains NP	11/12/2009	New	4200		

Type	Date	Action	Gazetted area (ha) (rounded)	Total number	Total area (ha)
Cliff Island NP	12/02/2010	Plan Amendment	-5.1		
Bellthorpe NP	26/03/2010	New	7550.61		
Clump Mountain NP	26/03/2010	Extension	29.4055		
Narkoola NP	26/03/2010	New	11799		
Claremont Isles NP	07/05/2010	Plan Amendment	14.9		
Sandbanks NP	07/05/2010	Plan Amendment	-2.3		
Saunders Islands NP	07/05/2010	Plan Amendment	42.727		
Sir Charles Hardy Group NP	07/05/2010	Plan Amendment	2.63		
Barron Gorge NP	04/06/2010	Extension	4.82		
Bowling Green Bay NP	04/06/2010	Extension	228		
Castle Tower NP	04/06/2010	Extension	1611		
Dularcha NP	04/06/2010	Extension	326		
Eungella NP	04/06/2010	Extension	25		
Girringun NP	04/06/2010	Extension	1460		
Glass House Mountains NP	04/06/2010	Extension	2117.4		
Japoon NP	04/06/2010	Extension	13.4		
Kuranda NP	04/06/2010	Extension	0.513		
Macalister Range NP	04/06/2010	New	5563		
Mooloolah River NP	04/06/2010	Extension	39.5849		
Paluma Range NP	04/06/2010	Extension	361		
Pumicestone NP	04/06/2010	New	164		
Tewantin NP	04/06/2010	New	1299		
<b>National park</b>	<b>04/06/2010</b>			<b>281</b>	<b>7 781 428</b>
<b>National Park (Cape York Peninsula Aboriginal Land)</b>					
National Park (Cape York Peninsula Aboriginal Land)	01/07/2008			2	193 918
Errk Oykangand NP(CYPAL)	30/10/2009	New	38 170		
Marpa NP(CYPAL)	07/05/2010	New	37.8		
Alwal NP(CYPAL)	07/05/2010	New	42 510		
<b>National Park (Cape York Peninsula Aboriginal Land)</b>	<b>04/06/2010</b>			<b>5</b>	<b>274 636</b>
<b>National Park (Recovery)</b>					
<b>National park (recovery)</b>	<b>01/07/2009</b>			<b>18</b>	<b>27 671</b>
Mount Lewis NP(R)	11/12/2009	New	320		
Narkoola NP(R)	26/03/2010	New	2249		

Type	Date	Action	Gazetted area (ha) (rounded)	Total number	Total area (ha)
Tewantin NP(R)	04/06/2010	New	672		
National park (recovery)	04/06/2010			21	30 912
<b>Conservation Park</b>					
Conservation park	01/07/2009			204	73 253
Clear Mountain CP	31/07/2009	Extension	531		
Conondale CP	31/07/2009	Extension	1.24		
Bunyaville CP	25/09/2009	New	630		
Conway CP	25/09/2009	New	146		
Deception Bay CP	25/09/2009	New	123.37		
Eumundi CP	25/09/2009	New	496		
Calliope CP	09/10/2009	Revoke	-23.81		
Baldwin Swamp CP	13/11/2009	Revoke	-18.6		
Bingera CP 1	13/11/2009	New	37		
Bingera CP 2	13/11/2009	New	1		
Homevale CP	13/11/2009	New	19.45		
Smithfield CP	13/11/2009	Revoke	0.0569		
Mt Cooroy CP	04/12/2009	Revoke	-1.12		
Meridan Plains CP	11/12/2009	New	39.93		
Bellthorpe CP	26/03/2010	New	14		
Deception Bay CP	26/03/2010	Extension	54.8		
Skull Knob CP	26/03/2010	Extension	274.4		
Glass House Mountains CP	04/06/2010	New	678.44		
Mon Repos CP	04/06/2010	Revoke	-0.1578		
Morgan Park CP	04/06/2010	New	284.5		
Mouth of Baffle Creek CP 2	04/06/2010	Extension	10.4		
Woondum CP	04/06/2010	New	2.5		
Conservation park	04/06/2010			216	66 007
<b>Resources Reserve</b>					
Resources reserve	01/07/2009			46	366 667
Bouldercombe Gorge RR	25/09/2009	Extension	2280.75		
Morgan Park RR	04/06/2010	Omit	284.5		
Resources Reserve	04/06/2010			45	366 382
<b>Nature Refuge</b>					
Nature refuge	1/07/2009			338	750 988
Palm Valley NR	03/09/2009	Revoke In Part	-56.2		

Type	Date	Action	Gazetted area (ha) (rounded)	Total number	Total area (ha)
Billaboo NR	03/09/2009	Revoke	-7456		
Brovinia NR	03/09/2009	New	362		
Charlie Moorhead NR	03/09/2009	New	24.0878		
Cherry NR	03/09/2009	New	110		
Cobbold Gorge NR	03/09/2009	New	4721		
Flagstone NR	03/09/2009	New	5650		
Gilberton NR	03/09/2009	New	818		
Hells Gate NR	03/09/2009	New	547		
Horan's Gorge NR	03/09/2009	New	191		
Mount Kanigan NR	03/09/2009	New	23.48		
Rattlesnake Point NR	03/09/2009	New	100.9		
Tepon-Wondecla NR	03/09/2009	New	21		
The Sanctuary NR	03/09/2009	New	44		
Toko Range NR	03/09/2009	New	160094		
Wong'ai NR	03/09/2009	New	15.72		
Range View NR	11/12/2009	Revoke In Part	-2765		
Avoid Island NR	19/02/2010	New	82.9		
Bluegrass NR	19/02/2010	New	120		
Castlevale NR	19/02/2010	New	200994		
Coonoona NR	19/02/2010	New	6		
Ethabuka NR	19/02/2010	New	213985		
Gilmore NR	19/02/2010	New	74332.7		
Holroyd NR	19/02/2010	New	283000		
kulki anga NR	19/02/2010	New	2.12		
Lacebark NR	19/02/2010	New	63		
Mareeba Tropical Savanna and Wetland Reserve NR	19/02/2010	New	1930		
North Head NR	19/02/2010	New	18 573		
Rainforest Ridge NR	19/02/2010	New	60.89		
Telemark NR	19/02/2010	New	2897		
Braehead NR	19/02/2010	Amend	0		
Noosa North Shore NR	19/02/2010	Amend	0		
Dingo Springs NR	19/02/2010	Extension	1788.85		
Nature refuge	07/07/2010			364	1 711 269
<b>Coordinated Conservation Area</b>					
Coordinated Conservation Area	1/07/2009			2	2121
No additions					
Coordinated Conservation Area	04/06/2010			2	2121

**Table B – Protected area authorities/permits granted and suspended/cancelled and applications refused in the year to 30 June 2010**

Category	No. Granted	No. Refused	No. Suspended/ Cancelled
Aboriginal traditional authority	0	0	0
Island custom authority	0	0	0
Camping <sup>1</sup>	154 273	0	0
Restricted access area	4	0	0
Taking, using, keeping or interfering with cultural or natural resources:			
• Apiary location	0	0	0
• Taking of water	0	0	0
• Scientific purpose	166	3	0
• Another purpose (educational)	17	0	0
Stock grazing	0	0	0
Stock mustering	26	1	0
Travelling stock	0	0	0
Entering a national park (scientific)	33	0	0
Commercial activity <sup>2</sup>	355	0	1
Soliciting donations or information	2	0	0
Group activity	372	0	0
Using recreational craft	0	0	0
Special activities	3	0	0

**Details of selected categories of some protected area permits granted in the year to 30 June 2010**

Number of people camping <sup>3</sup>	496 923
Average stay	2.6
Average group size	3.3
Camper nights	1 292 000
Number of operators with commercial activity permits	355
Commercial deeds of agreement entered	33
New commercial filming/photography permits	87
Filming/photography permits renewed	3

- 1 Estimate. Includes Camping Permits issued under the Recreation Areas Management Act for camping in the Fraser Island Recreation Area, the Moreton Island Recreation Area and the Bribie Island Recreation Area. Excludes camping undertaken under commercial activity permits.
- 2 Includes Commercial Activity Permits issued under the Recreation Areas Management Act for activities in the Green Island, Great Sandy, Moreton Island and Bribie Island Recreation Areas.
- 3 Estimate. Includes permits issued under the Recreation Areas Management Act for camping in Great Sandy, Moreton Island and Bribie Island National Parks in the Great Sandy, Moreton Island and Bribie Island Recreation Areas. Excludes children aged less than five years.

Table C – Changes to the status of forest reserves during 2009-2010

Type	Date	Action	Gazetted area (ha) (rounded)	Total number	Total area (ha)
Forest reserve	1/07/2009			69	144,489
Beninbi North FR	31/07/2009	New	343.6		
Cherbourg South FR	31/07/2009	New	265.9		
Conondale FR 1	31/07/2009	Amend	-3761		
Conondale FR 2	31/07/2009	Amend	-13 233.24		
Imbil FR 1	31/07/2009	Amend	-2742		
Kenilworth FR	31/07/2009	Amend	-6614		
Littabella South FR	31/07/2009	New	2345		
Nerang FR	31/07/2009	Amend	-1614.4		
Presho FR	31/07/2009	New	64 002		
Clear Mountain FR 1	31/07/2009	Omit	-210		
Clear Mountain FR 2	31/07/2009	Omit	-321		
Imbil FR 2	31/07/2009	Omit	-186		
Jimna FR	31/07/2009	Omit	-344		
Yabba FR 1	31/07/2009	Omit	-1789		
Bunyaville FR	25/09/2009	Omit	-630		
Maroochy FR 1	25/09/2009	Omit	-270		
Maroochy FR 3	25/09/2009	Omit	-226		
Heights of Victory FR	25/09/2009	New	393		
Round Mountain FR	25/09/2009	New	4508.9		
Tuchekoi FR	25/09/2009	Amend	-371		
Wickham FR	25/09/2009	Amend	-141		
Woondum FR 1	25/09/2009	Amend	-4001		
Rollingstone FR	13/11/2009	Revoke	-22.8289		
Monkhouse FR	11/12/2009	Extension	0.372		
Mount Cataract FR	11/12/2009	New	2360		
Heights of Victory FR	11/12/2009	Omit	-393		
Mount Lewis FR	11/12/2009	Omit	-21287		
Riflemead FR 1	11/12/2009	Omit	-627		
Riflemead FR 2	11/12/2009	Omit	-1043		
Round Mountain FR	11/12/2009	Omit	-4508.9		
Bellthorpe FR 1	26/03/2010	Amend	-305.61		
Bellthorpe FR 2	26/03/2010	Amend	-7259		
Macalister Range FR	26/03/2010	New	5614.8395		
Beerburum FR 2	04/06/2010	Omit	-66		
Maleny FR	04/06/2010	Omit	-369		
Noosa FR 1	04/06/2010	Omit	-60		

Type	Date	Action	Gazetted	Total	Total area
Woondum FR 3	04/06/2010	Omit	-2.5		
Basilisk FR	04/06/2010	New	2210		
Beerburum FR 1	04/06/2010	Amend	1661.64		
Beerwah FR	04/06/2010	Amend	804.7849		
Macalister Range FR	04/06/2010	Amend	-5562.89		
Mooloolah FR	04/06/2010	Amend	-326		
Tewantin FR 1	04/06/2010	Amend	-1844.4		
Tewantin FR 3	04/06/2010	Amend	-66.6		
Forest Reserve	04/06/2010			61	143 895

**Table D – Commercial Activity Agreements in force during 2009-2010**

Company	Protected Area	Section	Activity Type	Date expires
AP Vessel Management Pty Ltd	Whitsunday Islands NP Molle Islands NP	Whitsunday Ngaro Sea Trail	Guided Commercial Camping Tours	2020
Aries Tours Pty Ltd	Springbrook National Park	Natural Bridge	Glowworm tour operations	1/04/2009
Australian Broadcasting Corp	Iron Range National Park		Filming / Photography	23/07/2008
Australian Tallship Cruises Pty Ltd	Whitsunday Islands NP Molle Islands NP	Whitsunday Ngaro Sea Trail	Guided tours	2020
Bellinger Holdings (Aust) Pty Ltd	Great Sandy National Park	Fraser Island	Tag-along Tours	30/11/10
Binna Burra Mountains Lodge	Lamington National Park	Binna Burra Section	Guided tours	31/12/2008
BJ Films Pty Ltd	Capricornia Cays National Park	Masthead Island	Commercial filming	12/08/2009
Blue Water Dive	Ex-HMAS Brisbane Conservation Park		Dive Operations	31/07/2015
Coral Sea Sailing Pty Ltd	Whitsunday Islands NP Molle Islands NP	Whitsunday Ngaro Sea Trail	Guided tours	2020
Comax Pty Ltd t/a Pelican 4X4 Hire	Great Sandy National Park	Fraser Island	Tag-along Tours	30/11/10
David Cookman t/a Sunshine Coast Hang Gliding Pty Ltd	Great Sandy National Park	Cooloola	Hang Gliding	31/12/2010
Derwent Hunter Yacht Charters Pty Ltd	Whitsunday Islands National Park	Whitsunday Island	Guided commercial camping tours	17/07/2007
Devins Pty Ltd t/a Beaches Backpackers Hervey Bay	Great Sandy National Park	Fraser Island	Tag-along Tours	30/11/10
Djabugay Business Development Aboriginal Corporation	Barron Gorge National Park		Tours	08/03/2010
Dutana Pty Ltd	Undara Volcanic National Park		Guided tours	12/10/2008
DWR Holdings Pty Ltd (trustee for D & P Robertson Family Trust) t/a Safari 4WD Hire	Great Sandy National Park	Fraser Island	Tag-along Tours	30/11/10
Eacham Shire Council	Malanda Falls National Park		Guided tours	30/09/2009
Eco Concept Development	Eungella National Park	Broken River	Kiosk	28/01/2017
Elanda Point Pty Ltd t/a Elanda Point Canoe Company – Boats Tours and Camping	Great Sandy National Park	Cooloola	Canoe based tours and Camping	11/11/2010
Great Adventures 4X4 Hire Pty Ltd	Great Sandy National Park	Fraser Island	Tag-along Tours	30/11/10
H & N Nicholson t/a Terania Rainforest Publishing	All mainland National Parks		Commercial filming / photography	30/06/2008
J.W. Hayes and B.J.Needs t/a A1 Fraser Roving Backpackers	Great Sandy National Park	Fraser Island	Tag-along Tours	30/11/10

Company	Protected Area	Section	Activity Type	Date expires
Heron Island Pty Ltd	Capricornia Cays National Park	Heron Island	Tours/excursions, Commercial photography	30/12/2011
Heron Island Pty Ltd	Capricornia Cays National Park	Wilson Island	Tours/excursions, Commercial photography	31/12/2012
Holiday Villages (Australia) Pty Ltd	Lindeman Islands National Park	Lindeman Island	Ranger services	
Ian & Marilyn Dean t/a Dean's Iceworx	Great Sandy National Park	Cooloola	Mobile vending operations	30/09/2008
Jean-luc Lejaille t/a Rainbow Paragliding	Great Sandy National Park	Cooloola	Hang gliding	31/12/2011
Joe Lockyer t/a Bedrock Village	Undara Volcanic National Park		Guided tours	30/06/2008
Jonathan Allen and Bernhard Herrmann t/a Sunshine State Paragliding Centre	Great Sandy National Park	Cooloola	Hang gliding	31/12/2010
David Love t/a Discovery Coast Ice & Cold Storage	Eurimbula National Park Deepwater National Park		Commercial ice sales	01/12/2012
Luxury Yacht Charters Pty Ltd	Whitsunday Islands NP Molle Islands NP	Whitsunday Ngaro Sea Trail	Guided Tours	2020
Graham Maifredi	Wooroonooran National Park and Tully Falls National Park		Guided tours	31/01/2018
Mardja Pty Ltd	Undara Volcanic National Park		Guided tours	23/06/2008
Meratell Pty Ltd ATF the Riddell Family Trust and Mooloolaba Dive Pty Ltd ATF the Mooloolaba Dive Trust t/a Sunreef Scuba Diving Services	Ex-HMAS Brisbane Conservation Park		Dive operations	31/07/2015
Moments in Time Pty Ltd (Andrew Harper, t/a Outback Camel Company)	Simpson Desert National Park		Commercial camel tours	31/10/2011
National Park Pty Ltd	Lamington National Park	Green Mountains Section	Guided tours	31/12/2008
National Park Pty Ltd (O'Reillys Guest House)	Lamington National Park	Green Mountains Section	Guided tours	31/12/2008
National Tour Company Pty Ltd	Springbrook National Park	Natural Bridge	Glowworm tour operations	1/04/2009
Naturescape Australia South Pacific Pty Ltd	Mainland National Parks		Commercial filming/ photography	01/05/2010
Neill Kennedy and Hayley Kennedy (Salty Dog Sea Kayaking)	Whitsunday Islands National Park	Whitsunday Islands	Guided Commercial Camping Tours	17/07/2007

Company	Protected Area	Section	Activity Type	Date expires
Network Ten Pty Ltd	All mainland National Parks		Commercial filming/ photography	26/06/2009
NHMS Pty Ltd (Trustee for Scheller Family Trust) t/a Fraser Magic	Great Sandy National Park	Fraser Island	Tag-along Tours	30/11/10
Nigel Walker t/a Wild Films	All mainland National Parks		Commercial filming/ photography	06/01/2010
NKM Holdings Pty Ltd	Eurimbula National Park		Guided tours	13/11/2008
Ocean Safari's Australia Pty Ltd	Whitsunday Islands NP Molle Islands NP	Whitsunday Ngaro Sea Trail	Guided Tours	2020
Outdoor Pursuits Australia Pty Ltd	Whitsunday Islands NP Molle Islands NP	Whitsunday Ngaro Sea Trail	Guided Commercial Camping Tours	2020
Outdoor Pursuits Australia Pty Ltd	Whitsunday Islands National Park	Whitsunday Islands	Guided commercial camping tours	17/07/2007
Outdoor Pursuits Australia Pty Ltd t/a Aussie Sea Kayak Company	Great Sandy National Park	Cooloola	Sea kayak guided safari and Day tours	31/01/2008
Ozsail Charter Yachts Pty Ltd	Whitsunday Islands National Park	Whitsunday Islands	Guided commercial camping tours	17/07/2007
Palace Backpackers Hervey Bay Pty Ltd t/a Palace Adventures	Great Sandy National Park	Fraser Island	Tag-along Tours	30/11/10
Pippies Beachhouse Pty Ltd (trustee for Pamenter Family Trust)	Great Sandy National Park	Fraser Island	Tag-along Tours	30/11/10
Rainbow Beach Adventure Co. Pty Ltd	Great Sandy National Park	Fraser Island	Tag-along Tours	30/11/10
Resort Graphics Pty Ltd	Whitsunday Islands National Park	Whitsunday Islands	Guided commercial camping tours	17/07/2007
Salty Dog Sea Kayaking	Whitsunday Islands NP Molle Islands NP	Whitsunday Ngaro Sea Trail	Guided Commercial Camping Tours	2020
Seven Network (Operations) Limited	All mainland National Parks		Commercial filming/ photography	30/10/2010
Silent Night Charters	Whitsunday Islands NP Molle Islands NP	Whitsunday Ngaro Sea Trail	Guided Tours	2020
Southern Cross Sailing Adventures Pty Ltd	Whitsunday Islands NP Molle Islands NP	Whitsunday Ngaro Sea Trail	Guided tours	2020

Company	Protected Area	Section	Activity Type	Date expires
St Helena Island Ferries Pty Ltd t/a AB Sea Cruises	St Helena Island National Park Fort Lytton National Park	St Helena Island National Park - Prison Stockade and roadways leading to the Prison Stockade	Guided tours; Operation of food and vending stalls	16/05/2010
Graham Steel	Various QPW managed areas		Guided bicycle tours	15/05/2010
Graham Steel	Wooroonooran, Tully Falls and Girringun National Parks		Guided bicycle tours	26/07/2017
Sunshine Coast Diving Pty Ltd t/as Scuba World	Ex-HMAS Brisbane Conservation Park		Dive operations	31/07/2015
Sydes, David and Julie and Yvonne Korving	Great Sandy National Park	Cooloola	Mobile vending operations	30/09/2008
Tablelands Regional Council	Malanda Falls National Park		Guided tours	1/1/2012
Tallship Adventures Pty Ltd	Whitsunday Islands NP Molle Islands NP	Whitsunday Ngaro Sea Trail	Guided Commercial Camping Tours	2020
Telfox Pty Ltd	Tully Falls and Tully Gorge National Parks		Guided tours	26/07/2017
The Silence productions Pty Ltd	Bowling Green Bay National Park		Commercial filming	5/8/2009
Tony Maxwell Dean t/a Rainbow Beach Ice and Bait	Great Sandy National Park	Cooloola	Mobile vending operations	30/09/2008
Tourism Queensland	All Protected Areas within Queensland		Filming and photography	31/10/2011
Nigel Walker t/as Wild Films	All protected areas within Queensland		Filming and Photography	07/01/2010
Unique Fraser Pty Ltd (trustee for T Jacob Family Trust)	Great Sandy National Park	Fraser Island	Tag-along Tours	30/11/10
Voetstoets Pty Ltd	Whitsunday Islands NP Molle Islands NP	Whitsunday Ngaro Sea Trail	Guided Tours	2020
Whitsunday Island Camping Connections Pty Ltd	Whitsunday Islands NP Molle Islands NP	Whitsunday Ngaro Sea Trail	Guided Commercial Camping Tours	2020
Whitsunday Island Adventure Camping Pty Ltd	Whitsunday Islands National Park	Whitsunday Islands	Guided commercial camping tours	17/07/2007

Table F – Status of Conservation Plans as at 30 June 2010

Conservation Plan approved by the Governor in Council (s119 NC Act)
Conservation Plans in force
Nature Conservation (Dugong) Conservation Plan 1999
Nature Conservation (Estuarine Crocodile) Conservation Plan 2007
Nature Conservation (Koala) Conservation Plan 2006
Nature Conservation (Macropod) Conservation Plan 2005
Nature Conservation (Protected Plants) Conservation Plan 2000
Nature Conservation (Whales and Dolphins) Conservation Plan 1997

Table G - Conservation agreements gazetted under the *Nature Conservation Act 1992* during 2009-2010

Nature Refuge Name	Gazettal Date	Comments	Gazetted Area (ha)	Local Government
Brovinia NR	03/09/2009	Brovinia Nature Refuge protects vegetation with a large tract size, high connectivity and good condition and biodiversity values. It includes vegetation forming part of a bioregional wildlife corridor and contains two Of Concern regional ecosystems.	362	North Burnett Regional
Charlie Moorhead NR	03/09/2009	Provides known habitat for the endangered species <i>Croton mamillatus</i> and <i>Plectranthus nitidus</i> , the vulnerable koala ( <i>Phascolarctos cinereus</i> ) and the rare <i>Alyxia magnifolia</i> and <i>Symplocos harroldii</i> . It protects important corridor vegetation between Incanto Nature Refuge and Wararba Creek Conservation Park and also protects riparian vegetation along the upper reaches of the Caboolture River.	24.0878	Moreton Bay Regional
Cherry NR	03/09/2009	Rocky screes and overhangs containing caves feature in Cherry Nature Refuge. It contributes to protection for two regional ecosystems including Of Concern open forest and provides protection of habitat containing individual plants of the rare <i>Notelaea pungens</i> .	110	North Burnett Regional
Cobbold Gorge NR	03/09/2009	Known habitat for the vulnerable <i>Solanum carduiforme</i> and rare Gilbert River Ghost Gum ( <i>Corymbia glibertensis</i> ), <i>Dodonea oxyptera</i> , <i>Labichea brassi</i> and <i>Leptospermum palladium</i> is protected on Cobbold Gorge Nature Refuge. Numerous not Of concern regional ecosystems with no or low representation in the protected area estate are enhanced on this nature refuge. Significant cultural heritage values are protected including Indigenous cultural heritage in the form of artwork including paintings and stencils, and European cultural heritage in the form of John Corbett's grave.	4 721	Etheridge Shire
Flagstone NR	03/09/2009	Large tracts of undisturbed remnant vegetation provide significant landscape level corridor linkage throughout the Burdekin River catchment. Protection for Of concern regional ecosystem <i>Eucalyptus tereticornis</i> and/or <i>Eucalyptus</i> spp. tall woodland on alluvial plains is enhanced.	5 650	Whitsunday Regional
Gilberton NR	03/09/2009	Natural springs and associated wetland systems are present on Gilberton NR. It protects known habitat for the vulnerable <i>Cycas cairnsiana</i> , the rare <i>Dodonaea oxyptera</i> and <i>Labichea brassii</i> and the vulnerable black-throated finch (white-rumped subspecies). Two Of Concern regional ecosystems are represented.	818	Etheridge Shire

Nature Refuge Name	Gazettal Date	Comments	Gazetted Area (ha)	Local Government
Hells Gate NR	03/09/2009	Hells Gate NR contains the prominent granite feature known as Hells Gate - part of a mountainous landscape that forms part of the Leichhardt Range. It provides catchment protection of: Red Hill Creek which flows into the Bowen River, and; Glenmore Creek which flows into the Bowen River.	547	Whitsunday Regional
Horan's Gorge NR	03/09/2009	Horan's Gorge NR includes the western half of the significant geological feature known as Horan's Gorge and compliments the adjoining Horan's Gorge section of Girraween National Park. It provides protection for threatened species including: the endangered <i>Boronia granitica</i> , the vulnerable spotted-tailed quoll and <i>Acacia ruppii</i> and the rare grey goshawk, <i>Underwoodisaurus sphyrurus</i> , <i>Acacia latisepala</i> and <i>Bertya glandulosa</i> . An Endangered and an Of Concern regional ecosystem occur on the nature refuge.	191	Southern Downs Regional Council
Mount Kanigan NR	03/09/2009	Mount Kanigan NR supports remnant vegetation that is in good condition with high scenic amenity value. Known habitat for the rare <i>Alyxia magnifolia</i> and <i>Choricarpia subargentea</i> and the vulnerable <i>Fontainea venosa</i> is provided protection here.	23.48	Gympie Regional
	03/09/2009	Rattlesnake Point NR provides direct connectivity to Cedar Bay National Park along the entire northern and eastern boundaries of the land. Suitable habitat for the endangered southern cassowary and spotted-tailed quoll is protected in this nature refuge. Three Of Concern regional ecosystems also occur here.	100.9	Cook Shire
Tepon-Wondecla NR	03/09/2009	Tepon-Wondecla NR provides suitable habitat for the endangered southern cassowary <i>Casuarius casuarius johnsonii</i> . It also contains an Endangered regional ecosystem with low representation in the protected area estate and an Of Concern regional ecosystem with no representation.	21	Tablelands Regional
The Sanctuary NR	03/09/2009	Contains known habitat for the vulnerable spotted-tailed quoll ( <i>Dasyurus maculatus maculatus</i> ) and the rare common wombat ( <i>Vombatus ursinus</i> ), <i>Acacia latisepala</i> and <i>Dodonaea hirsute</i> . Three regional ecosystems are supported including one Of Concern.	44	Southern Downs Regional Council
Toko Range NR	03/09/2009	Toko Range NR compliments the adjoining Mulligan River Nature Refuge. It includes the significant geological features known as Toko Gorge, Toko Waterhole and Toko Range. It also incorporates the Mulligan River Headwaters and Mitchell Grass Plains. It supports the population and habitat of the vulnerable Kowari ( <i>Dasyuroides byrnei</i> ) and Mulgara ( <i>Dasyercus cristicauda</i> ) as well as known habitat for the rare <i>Ctenotus aphrodite</i> (a striped-skink). Significant Indigenous and non-Indigenous cultural heritage also occur here.	160 094	Diamantina Shire

Nature Refuge Name	Gazettal Date	Comments	Gazetted Area (ha)	Local Government
Wong'ai NR	03/09/2009	Contains remnant vegetation strategically located next to a very high conservation value area identified as one of the largest tracts of remnant vegetation in the vegetation bioregion. It includes diverse habitat in good condition that forms part of a bioregional wildlife corridor. Provides suitable habitat for endangered, vulnerable and rare flora and fauna. Supports four regional ecosystems including two of Concern and one Endangered.	15.72	Gympie Regional
Avoid Island NR	19/02/2010	Protects and enhances six regional ecosystems including four of Concern. Provides habitat for the rare eastern curlew ( <i>Numenius madagascariensis</i> ) and the vulnerable beach stone-curlew ( <i>Esacus magnirostris</i> ) and flatback turtle ( <i>Natator depressus</i> ).	82.9	Isaac Regional
Bluegrass NR	19/02/2010	Bluegrass NR protects the endangered ecological community Natural Grasslands of the Queensland Central Highlands and the Northern Fitzroy Basin and an Of Concern regional ecosystem. Contains known habitat for the vulnerable <i>Dichanthium queenslandicum</i> and suitable habitat for the endangered <i>Trioncinia retroflexa</i> .	120	Isaac Regional
Castlevale NR	19/02/2010	Contains known habitat for the endangered <i>Eucalyptus pachycalyx</i> subsp. <i>waajensis</i> and the rare <i>Apatophyllum flavovirens</i> , rough-leaved yellowjacket ( <i>Corymbia scabrida</i> ), <i>Eucalyptus decolour</i> , <i>Grevillia cyranostigma</i> , <i>Pararistolochia praevanosa</i> and <i>Shonia carinata</i> . Protects the extent of the brigalow ( <i>Acacia harpophylla</i> dominant and co-dominant) ecological community. Provides protection for parts of a number of catchments that occur on the land. It incorporates significant Indigenous and European cultural values. It contains a large number of regional ecosystems including nine that are Endangered and 14 Of Concern.	200 994	Central Highlands Regional and Blackall Tambo Regional
Coonoona NR	19/02/2010	Coonoona NR contains vegetation that lies within a junction of three bioregional wildlife corridors and provides catchment protection for an upper tributary of Eudlo Creek and vegetation. Contains known habitat for the vulnerable tusked frog, glossy black-cockatoo, Richmond birdwing butterfly, koala and <i>Romnaldia strobilacea</i> and the rare grey goshawk and <i>Pararistolochia praevanosa</i> . It also contains suitable habitat for the endangered double-eyed fig-parrot (Coxen's), the vulnerable plumed frogmouth and the rare <i>Eroticoscincus graciloides</i> , Lewin's rail, sooty owl and <i>Alyxia magnifolia</i> . Four regional ecosystems are represented including one that is Endangered and two Of Concern.	6	Sunshine Coast Regional
Ethabuka NR	19/02/2010	Contains known habitat for the vulnerable mulgara and <i>Eremphila tetraptera</i> and the rare <i>Ctenotus ariadnae</i> , grey falcon, square-tailed kite, black-chinned honeyeater, redthroat, freckled duck and <i>Sclerolaena everistiana</i> . It also contains suitable habitat for a number of threatened species including the endangered dusky hopping-mouse and night parrot; the cultural and natural values of the adjoining Simpson Desert National Park and Mulligan River Nature Refuge. It provides catchment protection for the nationally significant Mulligan River-Wheeler Creek Junction wetland. Numerous regional ecosystems are present including one that is Endangered.	213 985	Diamantina Shire

Nature Refuge Name	Gazettal Date	Comments	Gazetted Area (ha)	Local Government
Gilmore NR	19/02/2010	Gilmore NR provides landscape connectivity with Idalia National Park that holds a population of the endangered bridled nailtail wallaby. It contains riparian areas of the Bulloo River and its named tributaries. It provides protection of habitat for rare and threatened species and numerous regional ecosystems including three Of Concern.	74 332.7	Quilpie Shire
Holroyd NR	19/02/2010	Holroyd NR adjoins Mungkan Kandju National Park and enhances protection for the natural and cultural values of the national park. Catchment protection is provided for a number of rivers, a creek, lagoons, waterholes and swamps and the nationally important wetlands of the Northern Holroyd Plain Aggregation. Known habitat of the rare <i>Arthragrostis clarksoniana</i> , <i>Brachychiton vitifolius</i> , <i>Dianella incollata</i> and <i>Gardenia scabrella</i> is present as well as suitable habitat for a number of threatened species. It also contains numerous regional ecosystems with five that are Of Concern.	283 000	Cook Shire
kulki anga NR	19/02/2010	Known habitat of the endangered southern cassowary and a number of rare plants is present as well as suitable habitat for a further 11 rare and threatened plant species and the endangered common mistfrog and Australian lacelid, and three rare frog species. The natural and cultural values of the nearby Daintree National Park are supported. And two of the three regional ecosystems on the nature refuge are Of Concern.	2.12	Cairns Regional
Lacebark NR	19/02/2010	Suitable habitat for the rare Austral wisteria, giant ironwood and hairy hazelwood plant species is present. It contains vegetation that has very high condition and ecosystem diversity values, vegetation that forms part of a Bioregional Wildlife Corridor and vegetation that is part of a tract that is one of the largest in the bioregion. One of three regional ecosystems present is Endangered. The cultural and natural values of the adjoining Woondum Forest Reserve are enhanced.	63	Sunshine Coast Regional
Mareeba Tropical Savanna and Wetland Reserve NR	19/02/2010	This nature refuge supports known habitat for the vulnerable buff-breasted button-quail <i>Turnix olivii</i> and Rufous owl (southern subspecies) <i>Ninox rufa queenslandica</i> , the rare Mareeba Rock-wallaby <i>Petrogale mareeba</i> , cotton pygmy-goose <i>Nettapus coromandelianus</i> , black-necked stork <i>Ephippiorhynchus asiaticus</i> and square-tailed kite <i>Lophoictinia isura</i> , the vulnerable plant <i>Acacia guymeri</i> and the rare plants <i>Plectranthus spectabilis</i> and <i>Rhamphicarpa australiensis</i> . Lacustrine and palustrine wetlands are supported as well as Eucalypt and Melaleuca woodland regional ecosystems that have low representation in the protected area estate.	1 930	Tablelands Regional
North Head NR	19/02/2010	North Head NR contains known habitat for the rare <i>Drummondita calida</i> and <i>Leptospermum palladium</i> . Indigenous and European cultural heritage values are present. And numerous regional ecosystems with low or no representation in the protected area estate are represented here.	18 573	Etheridge Shire
Rainforest Ridge NR	19/02/2010	Known habitat for the vulnerable koala ( <i>Phascolarctos cinereus</i> ) is present. Catchment protection for the upper Mary River system is provided on this nature refuge. Two of three regional ecosystems present are Of Concern.	60.89	Sunshine Coast Regional

Nature Refuge Name	Gazettal Date	Comments	Gazetted Area (ha)	Local Government
Telemark NR	19/02/2010	Telemark NR is part of an identified State Wildlife Corridor and provides an extension/buffer to the adjoining Callrossie State Forest 227. Known habitat for the vulnerable <i>Macrozamia crassifolia</i> and the rare <i>Eucalyptus rubiginosa</i> and <i>Notelaea pungens</i> plant species is present. Catchment protection is provided to the head waters of the Burnett River Catchment. It also contains an Endangered regional ecosystem and several cultural heritage sites exhibiting Aboriginal hand stencils.	2 897	North Burnett Regional
Dingo Springs NR	19/02/2010	This is an extension. Dingo Springs NR provides protection for the Einasleigh River, a significant drought refuge and contains a flowing mound spring supporting a woodland with wetland species. It contains suitable habitat for the vulnerable <i>Chamaesyce carissoides</i> and <i>Cycas cairnsiana</i> and the rare <i>Lerista ameles</i> plant species. One of thirteen regional ecosystems present is Of Concern.	1 788.85	Etheridge Shire

Summary Table 1 July 2009 – 30 June 2010

Nature Refuges Gazetted	
New	27
Extensions	1
Revocations	1 and 2 partial
Administrational Adjustment	2
Total	33
Area Gazetted (ha)	
New	968 768.7978
Extensions	1788.85
Revocations	-10277.2
Administrational Adjustment	0
Total (+/- to Previous Gazetted Area)	960 280.4478

**Table H - Summary of information regarding wildlife licences**

Category	Current as at 30/6/10	Issued Jul 2009 – Jun 2010 <sup>1</sup>	Suspended	Cancelled	Refused	Withdrawn	Surrendered	Invalid
Commercial wildlife	166	161	0	0	0	7	1	4
Commercial wildlife (macropods)	132	134	0	0	0	0	0	0
Recreational wildlife	30 354	9297	0	0	0	39	13	44
Commercial wildlife harvesting	29	44	0	0	0	0	0	2
Commercial wildlife harvesting (macropods)	1583	1624	0	0	2	0	0	0
Recreational wildlife harvesting	27	34	0	0	0	2	0	0
Wildlife demonstrator	33	47	0	0	0	0	0	0
Wildlife exhibitor	37	46	0	0	0	2	0	1
Wildlife farming	21	22	0	0	0	1	0	0
Museum	1	0	0	0	0	0	0	0
Herbarium	1	0	0	0	0	0	0	0

<sup>1</sup> The number of current permits may be fewer than the permits issued during 2009–2010 due to permits expiring during the reporting period.

Table I - Summary of information relating to wildlife permits

Category	Current as at 30/6/10	Issued Jul 2009 – Jun 2010	Suspended	Cancelled	Refused	Withdrawn	Surrendered	Invalid
Educational purposes	137	43	0	0	0	1	0	1
Keep protected wildlife	82	19	0	1	0	2	0	1
Keep prohibited wildlife	0	0	0	0	0	0	0	0
Scientific purposes	337	173	0	0	0	2	0	0
Wildlife movement	45	288	0	0	0	1	0	7
Commercial whale watching*	2	0	0	0	0	0	0	0
Clearing	128	186	0	0	0	17	1	8
Take, use, keep or interfere (scientific purpose)	246	166	0	0	2	0	0	1
Take, use, keep or interfere (educational purpose)	15	17	0	0	0	0	0	0
Authorisation to cultivate	66	4	0	0	0	0	0	1
Authorisation to propagate	632	112	0	0	0	1	0	0
Collection authority (dead protected wildlife)	0	0	0	0	0	0	0	0
Damage mitigation	318	783	0	0	3	16	1	10
Rehabilitation	509	339	0	0	0	7	0	6

\*Note: Under the *Nature Conservation (Whales and Dolphins) Conservation Plan 1997*, a commercial whale watching program can only be conducted under a permission granted under the *Marine Parks Act 2004*, and if the number of current permits issued under the *Marine Parks Act 2004* is fewer than 20 for the area between latitudes 24°30'S and 25°30'S, and fewer than three for the area between latitudes 25°30'S and 27°05'S.

# Crocodile Management Advisory Committee

<b>Term:</b>	Appointed 1 May 2007 to 30 April 2010
<b>Meetings:</b>	Nil
<b>Membership:</b>	<p><b>Chair:</b> Professor Gordon Grigg, Emeritus Professor of Zoology, School of Biological Sciences, The University of Queensland</p> <p><b>Members:</b> Mr Steve Peucker, Department of Employment, Economic Development and Innovation Mrs Anne Clarke, Department of Employment, Economic Development and Innovation Mr Peter Fisher, Melaleuca Crocodile Farm (crocodile industry) Mr Geoff McClure, Crocodile farming consultant Mrs Claudine Ward, Queensland Seafood Industry Association Councillor Paul Gregory, Cairns City Council Mr William Busch, Cape York Land Council Professor Craig Franklin, The University of Queensland Mr Barry McIntosh, Sunfish Queensland Inc Ms Janet Gamble, RSPCA Queensland Mr David Leyden, Australasian Regional Association of Zoological Parks and Aquaria Queensland Branch Mr Neville St John Wood, Tourism industry Mr Keith Cook, Cairns Crocodile Farm (crocodile industry) Mrs Angela Freeman, Alliance for Sustainable Tourism Mr John Rainbird, Cairns and Far North Environment Centre Mr George Hill, Surf Life Saving Queensland Ms Sarah Hoyal, Cairns and Far North Environment Centre Mr Nick Rigby, Director, Wildlife Management Branch, DERM</p>
<b>Terms of reference:</b>	<p>Under s132 of the <i>Nature Conservation Act 1992</i>, the function of the committee is to provide the Minister with advice on a range of conservation and management issues affecting crocodiles <i>Crocodylus porosus</i> and <i>C. johnstoni</i> in Queensland. Such advice may include (but not be limited to) public education, public safety, 'crocodiles of concern', commercial use of crocodiles and crocodile research.</p> <p>The Minister may consider the advice of the committee when formulating and/or evaluating policies and procedures that relate to crocodiles in Queensland.</p> <p>Members are chosen as representatives of industry, government, tourism, conservation and recreation groups with an interest in crocodile management.</p> <p>In 2008 the Queensland Premier commissioned independent reviewers to undertake a review of government bodies. The review found that <b>Crocodile Management Advisory Committee</b> should remain as it is. This decision was supported by the Queensland Government.</p>

## Waanyi Ministerial Advisory Committee (WMAC) Boodjamulla (Lawn Hill) National Park

<b>Meetings:</b>	Full committee meeting: 28 September 2009 Executive meeting: 13 January 2010, 17 February 2010, 18 August 2010
<b>Membership:</b>	<b>Members:</b> Ms Eunice O'Keefe, Ms Dell Burgen, Ms Nancy George, Mr Barry Dick, Ms Everyl Johnny, Mr Sidney Wilson, Mr Richard Brookdale, Mr Lenny Cubby and Mr Gordon Douglas. Mr Ronaldo Moreland
<b>Terms of reference:</b>	The primary function of the committee is to provide the Minister with advice concerning the administration of aspects of the Nature Conservation Act 1992, and in particular Aboriginal cultural matters relating to the management of Boodjamulla (Lawn Hill) National Park.  The Minister will have regard to the advice of the committee when implementing the Act and formulating or evaluating policies and procedures relating to Boodjamulla (Lawn Hill) National Park.

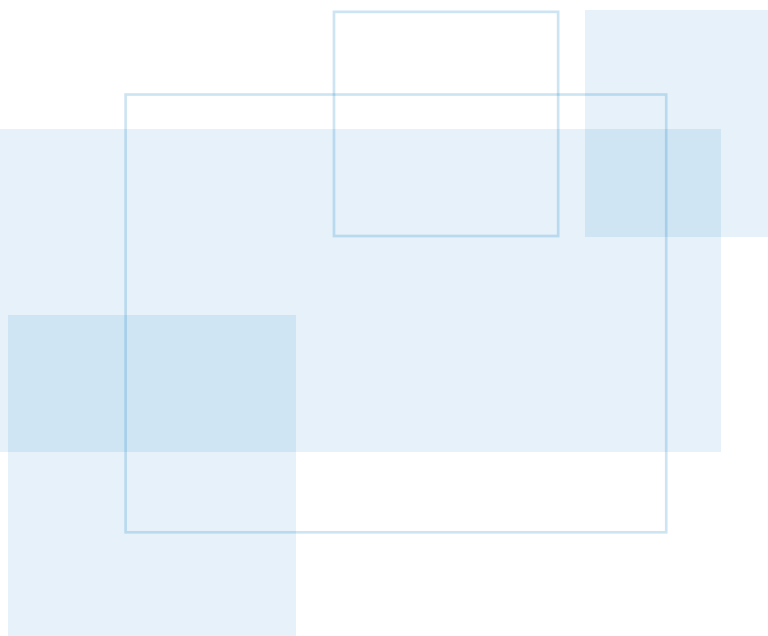
The committee consists of 12 people on the full committee and nine people on the executive committee. The committee represents the family groups of traditional owners that provide QPWS with advice on behalf of the Waanyi people for Boodjamulla (Lawn Hill) National Park.

The focus for the committee for 2009 – 2010 has been to assist in the development of the interpretive material that has been designed as part of major upgrades to the Boodjamulla National Park campground and visitor area. The committee has been consulted with in relation to cultural information, stories, artwork and language to ensure that QPWS can provide accurate representation of Waanyi culture. The committee took part in an archaeological dig to establish the origins of a midden in the highest impact area at Lawn Hill Gorge and gave approvals for redevelopment and construction of the campground and office building once the midden was determined to be a natural occurrence. Waanyi elders have also been instrumental in assisting QPWS rangers with the alignment of a boundary fence on the western boundary of the park. Elders have accompanied rangers to the sites and have given advice and clearance to construct the boundary fence.

The above membership was updated in September 2009 with Mr Ronaldo Moreland taking the place of his deceased father on the committee. Participation at the last two formal Waanyi meetings has been limited due to ageing members and potentially the regular involvement of Waanyi at the park in recent times. Participation in meetings will be an agenda item at the next Waanyi meeting.

# Report on the administration of *Marine Parks Act 2004*

For the reporting period  
1 July 2009 – 30 June 2010



*The Marine Parks Act 2004* provides for the conservation of Queensland's marine environment by implementing a comprehensive range of management strategies including the declaration of marine parks and the establishment of zones, designated areas and highly protected areas within the parks. These management arrangements are formalised through the gazettal of zoning plans and development of management plans.

Public authorities and other interested groups, including Aboriginal and Torres Strait Islander communities, are encouraged to assist in managing marine parks and to further the public's appreciation, understanding and enjoyment of the marine environment.

*The Marine Parks Act 2004* aims to achieve a coordinated and integrated approach with other environment conservation legislation, and recognises the cultural, economic, environmental and social relationships between marine parks and their adjacent lands and waters.

Australia's international responsibilities and intergovernmental agreements are important considerations in park management. Marine parks extend across areas adjacent to the Queensland coast which are under the control of both the Commonwealth and State Governments. Both governments have agreed that as far as practicable, in conserving marine parks, state legislation will be in line with the relevant Commonwealth legislation.

The plans and regulations that support this legislation are as follows:

- Marine Parks (Declaration) Regulation 2006
- Marine Parks (Great Barrier Reef Coast) Zoning Plan 2004
- Marine Parks (Great Sandy) Zoning Plan 2006
- Marine Parks (Moreton Bay) Zoning Plan 2008
- Marine Parks Regulation 2006.

## Amendments

*The Marine Parks Act 2004* had two minor amendments made in 2009-2010. The first amendment was made by the *Criminal Code and Other Legislation (Misconduct, Breaches of Discipline and Public Sector Ethics) Amendment Act 2009*, assented to on 11 August 2009, to make reference to the *Public Service Act 2008* which has replaced the *Public Service Act 1996*.

The Act was further amended by the *Sustainable Planning Act 2009*, assented to on 22 September 2009, to remove reference to the *Integrated Planning Act 1997* in order to reflect the commencement of the *Sustainable Planning Act 2009*.

The Marine Parks (Great Barrier Reef Coast) Zoning Plan 2004 and the Marine Parks Regulation 2006 were not amended in 2009-2010.

The Marine Parks (Declaration) Regulation 2006 was amended once by the Sustainable Planning Regulation 2009, notified in the Government Gazette on 27 November 2009, to reflect that the *Integrated Planning Act 1997* had been repealed and replaced with the *Sustainable Planning Act 2009*.

The Marine Parks (Great Sandy) Zoning Plan 2006 and the Marine Parks (Moreton Bay) Zoning Plan 2008, was amended by the Fisheries and Other Legislation Amendment and Repeal Regulation (No. 1) 2010, notified in the Government Gazette on 12 March 2010, which updated various terms to achieve greater consistency with the Fisheries Regulation.

## Funding

The Queensland Government contributed \$8 169 000 to the field management program (FMP) for the Great Barrier Reef (GBR).

After receipt and distribution of matching federal funding, DERM's combined recurrent and capital budget in 2009-2010 was \$12 918 580 for the GBR Field Management Program. Only a portion of this total is spent on state marine parks. The FMP operates across the federal GBR marine park, the state GBR coast marine park, island national parks and federal islands.

An annual budget of \$874 000 (operating) has been allocated to administer the Marine Parks Act in the Moreton Bay Marine Park. This year, an additional \$1M has been issued for the creation of three artificial reefs in the Marine Park. Moreton Bay and Great Sandy regions also received funding allocations under the *Nature Conservation and Recreation Areas Management Act*.

## Offences and enforcement

In 2009–2010, 112 marine park penalty infringement notices were issued.

There were no prosecutions conducted under the *Marine Park Act 2004* during 2009–2010.

### Marine Park permissions granted and suspended/cancelled and applications refused in the year 1 July 2009 to 30 June 2010

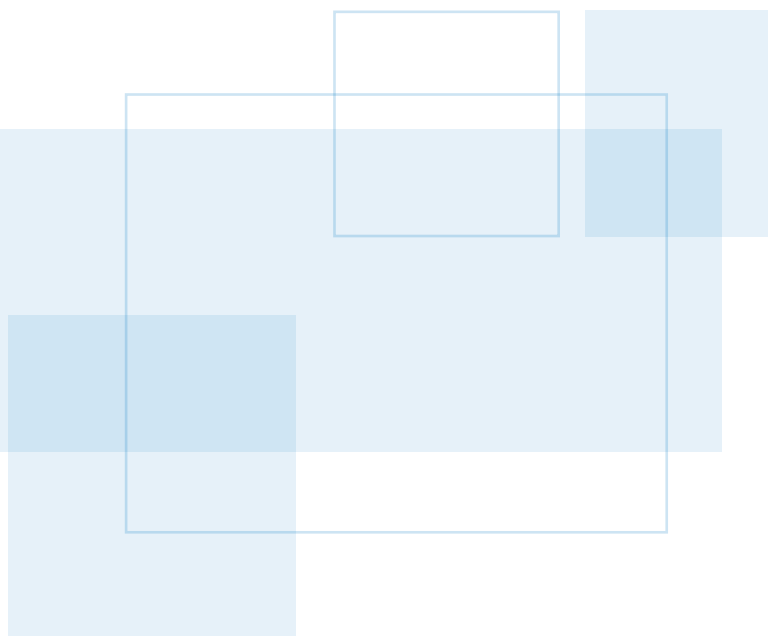
Marine Park permissions granted, refused and suspended/cancelled in the year 1 July 2009 to 30 June 2010			
Category	No. Granted	No. Refused	No. Suspended/ Cancelled
<b>State Only MP permissions</b>			
Coastal Works <sup>1</sup>	66	0	N/A
Tourism Programs	57	0	0
Other	94	1	1
<b>Joint permissions<sup>2</sup></b>			
Tourism Programs	296	4	0
Research permissions	63	0	0
Harvest permissions	49	0	0
Other	37	0	0

1. 'State Only' permissions for Coastal Works are administered by Environmental Services with input of QPWS staff.

2. Permits issued jointly by QPWS and the GBRMPA.

# Report on the administration of the *Water Supply (Safety and Reliability) Act 2008*

For the reporting period  
1 July 2009 – 30 June 2010



On 1 July 2008, the *Water Supply (Safety and Reliability) Act 2008* (the Act) introduced new provisions to protect public health—by regulating recycled water and drinking water quality, and by incorporating the existing service provider provisions of Parts 1–5 of Chapter 3 of the *Water Act 2000*.

The Act provides for the Chief Executive of the Department of Environment and Resource Management, as the regulator, to undertake certain duties under these provisions, which may include the preparation of an annual report (Chapter 2, Part 2 of the Act). This summary is the regulator's report for the period 1 July 2009 to 30 June 2010.

## Recycled water

Chapter 3 of the Act requires that a recycled water provider must have either an approved recycled water management plan (RWMP) or a granted exemption by the timeframes stipulated below for:

- augmenting drinking water supplies—these schemes must have an approved RWMP
- dual reticulation or the irrigation of minimally processed food crops—existing schemes had to have an approved RWMP or an exemption by 1 July 2009, and any new ones prior to commencing supply
- any other purposes—schemes that existed before 1 July 2008 must have an approved RWMP or exemption by 1 July 2013. Those that commenced supply on or after 1 July 2008 must have an approved RWMP or exemption within one year of first supplying the water.

Schemes that have been declared critical, such as the Western Corridor Recycled Water Project and schemes that supply recycled water for dual reticulation cannot obtain an exemption.

Three regulatory guidelines have been prepared by the regulator to assist recycled water providers to comply with the recycled water provisions of the Act. These are:

- Recycled water management plan and validation guidelines
- Recycled water management plan exemption guidelines
- Water quality guidelines for recycled water schemes.

The regulator has provided ongoing advice on the regulatory requirements for the RWMP for the Western Corridor Recycled Water Project as well as numerous other water recycling projects for dual reticulation, the irrigation of a range of minimally processed food crops and many other uses. To date, the department has granted two exemptions (for greywater schemes), and two RWMP (for a dual-reticulation scheme). The

department currently has six formal applications seeking approval of a Recycled Water Management Plan and one of an exemption. The department is also assessing the Validation Program for the Western Corridor Scheme.

## Drinking water quality

The *Water Supply (Safety and Reliability) Act 2008* introduced new requirements in Queensland in relation to managing drinking water quality, aimed at protecting public health. The new provisions, which are being phased in over two stages, require drinking water service providers to:

- undertake monitoring and reporting on drinking water
- have an approved Drinking Water Quality Management Plan (a Plan) in place.

From 2 January 2009 until a Plan is in place, providers are required to:

- monitor their drinking water quality
- submit to the regulator, quarterly reports summarising this monitoring
- report drinking water quality incidents to the regulator.

Procedures and processes for communicating with, and providing technical support to, providers are in place. The regulator also works closely with Queensland Health to ensure drinking water quality incidents are appropriately managed and public health is protected.

In May 2009, the regulator was advised of a fluoride overdosing incident associated with North Pine Water Treatment Plant. At the conclusion of the investigation into this incident, the regulator required Seqwater and LinkWater, to undertake a number of actions to minimise the potential reoccurrence of an incident of this nature. Seqwater completed all of the required actions in December 2009 and Linkwater are required to finalise their actions by 30 June 2010.

All providers must have an approved Plan in place in accordance with the timeframes stipulated in the Act. The timeframes span a three year period, with large providers required to have an approved plan by 1 July 2011.

All Plans must comply with the requirements detailed in the Act in terms of hazard identification, risk assessment and risk management. These requirements are reflective of the approach outlined in the Australian Drinking Water Guidelines 2004 and will require the provider to assess and manage any risks associated with their drinking water supply and monitor for particular water quality parameters to verify that public health is being protected. Support will be available for providers to assist with the

development of these plans in the form of guidelines and group and individual workshops.

Providers have been, and continue to be, responsible for the safety and quality of their drinking water supplies.

## Other matters

Parts 1–5 of Chapter 2 of the *Water Supply (Safety and Reliability) Act 2008* give certain rights and responsibilities to the providers of water and sewerage services.

The regulator continued to formally register organisations as service providers, as required by the Act. Four new service providers were registered, two service providers had their registration cancelled as they no longer met the registration criteria and one transferred all of the services it provided to an existing service provider. The number of registered service providers in each of the defined size categories as at 30 June 2010 is listed here:

Small	95
Medium	32
Large	38
Total	165

All service providers must prepare, unless they have an exemption, a strategic asset management plan (SAMP) for approval by the regulator and customer service standards (CSS) to cover those customers who do not have a contract with the service provider for the supply of registered services. The SAMP must demonstrate how the continuity of supply of water and sewerage services will be maintained. They must also prepare annual reports on their performance with respect to the SAMP and CSS.

All service providers should have prepared SAMPs, CSS and annual reports with the only exceptions being:

- those service providers, who had contracts with all of their customers, and were therefore not required to have CSS
- those small service providers who sought and were granted exemptions for SAMP and/or CSS
- those who had been registered for less than 12 months

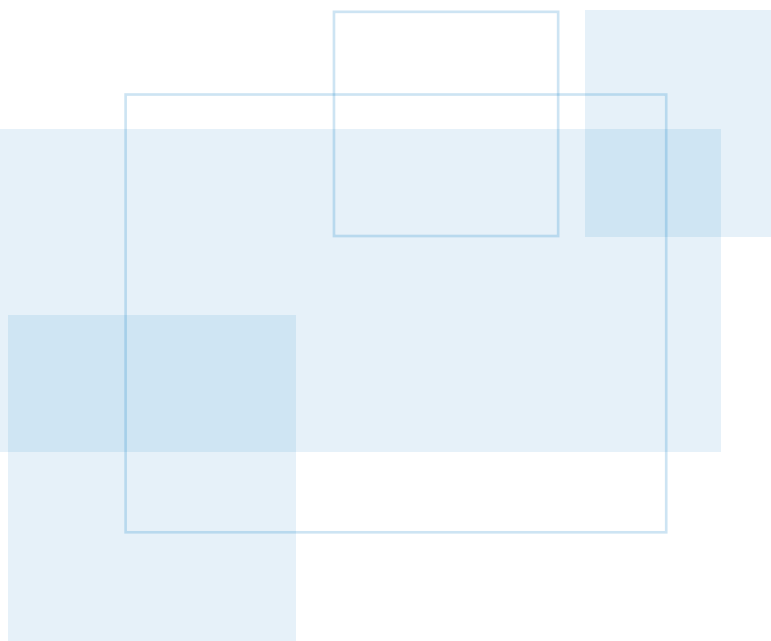
The provisions requiring drought management plans (DMP) and system leakage management plans (SLMPs) progressively came into effect from 1 October 2005. Existing service providers were given a transitional timeframe for providing the plans, whilst new service providers have to provide a DMP within one year and

a SLMP within two years of being registered. A number of service providers are not required to prepare a DMP since they do not hold a water entitlement.

Exemptions from preparing both plans are available to all service providers, regardless of size, who meet the established criteria. Service providers are required to report annually on their performance with respect to the SLMP.

A number of service providers have not fulfilled all of their obligations under the *Water Supply (Safety and Reliability) Act 2008*. Departmental officers are continuing to work with these service providers to ensure their compliance.

# Queensland Heritage Council—Report 2009-2010



The Queensland Heritage Council has been operating continuously since 1992. Its establishment and functions are set out in the *Queensland Heritage Act 1992*. The overall purpose of the Heritage Council is to help achieve the conservation of Queensland's cultural heritage for the benefit of the community and future generations. The Heritage Council must meet a minimum of six times a year.

Under the *Queensland Heritage Act 1992*, the Queensland Heritage Council's principal functions are to:

- provide strategic advice to the Minister about matters relating to Queensland's cultural heritage
- decide applications to enter places or remove places from the Queensland Heritage Register
- provide information to the community to encourage interest in, and understanding of, Queensland's cultural heritage
- advise government entities and community organisations about conserving Queensland's cultural heritage
- encourage the appropriate management of places of cultural heritage significance.

In 2009, the first strategic framework for managing Queensland's heritage places was launched. *The Queensland Heritage Strategy: a ten year plan* was developed by the Queensland Government in association with the Queensland Heritage Council. The strategy sets out the following priorities to help achieve a sustainable future for the State's heritage:

- improving the way Queenslanders understand and value their heritage
- embedding heritage in mainstream policy and planning
- strengthening Queensland's investment in managing and conserving its heritage
- leading and partnering with government, community and industry to conserve Queensland's heritage
- building the capacity of government, community and industry to conserve Queensland's heritage.

The Queensland Heritage Council consists of 12 people appointed by the Governor-in-Council, including a chair and deputy chair. Five members must be appointed to represent specific organisations. The remaining seven members are appointed for their knowledge, expertise and interest in heritage conservation. Terms of appointment are up to three years. A member can be reappointed provided their total number of years of continuous service does not exceed six years.

Current members of the Queensland Heritage Council are:

- David Eades (urban economist), chair
- Christopher Buckley (town planner), deputy chair
- Gordon Grimwade (National Trust representative)
- Barbara Hovard (local government representative)
- Howard Guille (union representative)
- Rod Litster (property industry representative)
- John Cotter (rural industries representative)
- Peter Marquis-Kyle (heritage architect)
- Emily Wall (architect and academic)
- Andrew Barnes (engineer)
- Jane Lennon (heritage consultant)
- Virginia Lee (landscape architect and academic).

The Queensland Heritage Council is supported by two standing committees, the Strategic Register Committee and the Policy Committee. The Strategic Register Committee makes decisions about applications to enter places in the Queensland Heritage Register. The Policy Committee aims to progress the Queensland Heritage Strategy priorities and to guide strategic projects and initiatives.

The Department of Environment and Resource Management (DERM) supports and funds Queensland Heritage Council's operations. The department's Heritage Branch provides administrative and technical assistance for meetings, communications, projects, applications related to the Queensland Heritage Register and applications for development proposed by the State Government.

During 2009–2010 the Queensland Heritage Council:

- helped to develop and launch Queensland's first heritage strategy
- launched its own website: [www.qldheritage.org.au](http://www.qldheritage.org.au)
- initiated the Australian e-Heritage project to improve access to digital heritage resources through the Heritage Chairs and Officials of Australia and New Zealand
- held a national forum with University of Queensland at its heritage-listed Ipswich Campus - *the Digital Future of Heritage*
- promoted the state-wide survey of heritage through a public campaign, *Our Shared Heritage*, seeking suggestions to identify important heritage places not currently entered in the Queensland Heritage Register
- participated in the *National Trust of Queensland Bendigo Bank Heritage Awards*
- contributed to a national heritage and sustainability project led by Heritage Victoria

- published two issues of *Time & Place*, the official newsletter of the Queensland Heritage Council
- continued the rural heritage adviser service assisting owners of rural heritage places with access to expert advice
- made a number of public submissions about heritage planning issues including a submission about the draft Greenspace Strategy, regional plans and the Fortitude Valley Neighbourhood Plan
- further considered the policy impacts and settings arising from the inclusion of archaeology in the most recent amendments to the Heritage Act
- progressed the concept of a “heritage bank” for Queensland.

The Council achieved its statutory obligations under the *Queensland Heritage Act 1992* including:

- held nine Heritage Council meetings including a regional meeting in Gympie that included a community event, meeting with local government and visits to heritage sites in and around Gympie
- held 10 Strategic Register Committee meetings and eight Policy Committee meetings
- decided 100 per cent of applications to the Queensland Heritage Register within the statutory timeframes

- entered 26 State heritage places and four archaeological places in the Queensland Heritage Register, removed one State heritage place from the Queensland Heritage Register and decided not to enter nine places that were nominated to Queensland Heritage Register
- approved two certificates of immunity
- provided five recommendations about the development of heritage places proposed by the State Government to the responsible Ministers
- provided advice to DERM about development of state planning instruments, heritage management principles for properties owned by the State Government, complex development applications and the state-wide survey of heritage places.

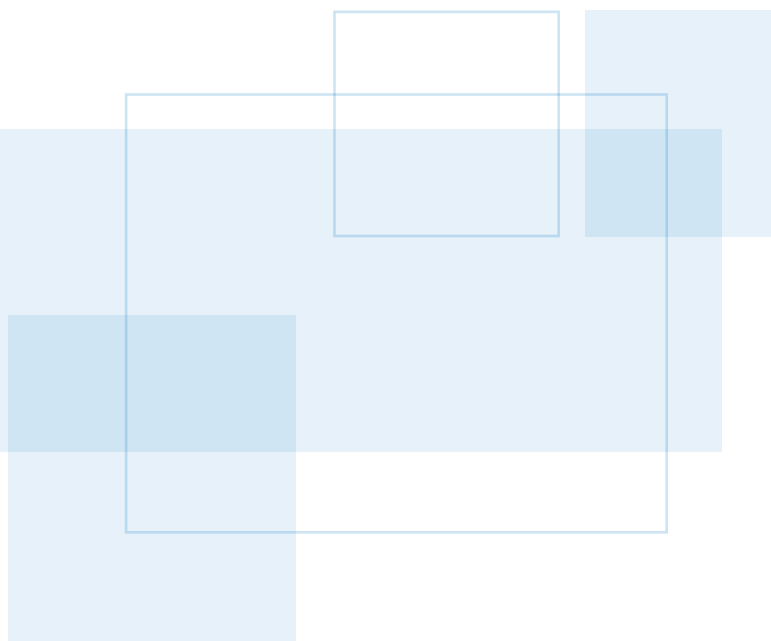
The number of places in the Queensland Heritage Register at 30 June 2010 was 1 627.

The Queensland Heritage Council can be contacted by email on [admin@qldheritage.org.au](mailto:admin@qldheritage.org.au) or by writing to:

Queensland Heritage Council  
 Level 9, 400 George Street  
 GPO Box 2454  
 Brisbane, Queensland, 4001

David Eades  
 Chair  
 Queensland Heritage Council

# Newstead House— Board of Trustees Report



## Constitution

The Board of Trustees of Newstead House is constituted under the *Newstead House Trust Act 1939*.

## Objectives, functions and powers

The Board is required to govern, manage and control Newstead House, Brisbane.

## Structure and organisation

The Board operates out of Newstead House, Breakfast Creek Road, PO Box 3121, Newstead, Queensland 4006.

## Membership

At 30 June 2010 membership comprised Ms Kirsti Simpson, Chair, representing the Queensland Government, Mr Stephen Sheaffe representing the Royal Historical Society of Queensland and Mrs Helen Gregory representing the Brisbane City Council.

## Staff

At 30 June 2010, staff comprised Mr David Gibson (director and secretary to the Board).

## Review of progress in achieving statutory obligations

With both the State of Queensland and the municipality of Brisbane having Sesquicentenary celebrations in 2009, the year under review saw Newstead House provide leadership in creating opportunities for a 'grass roots' celebration of this important anniversary.

Initiatives included outside broadcasts, special programs on the Sesquicentaries on 4MBS 103.7 FM, the traditional twilight observance of Proclamation Day and, in association with *Friends of Newstead Inc.*, the public celebration of the little known fact that on 10 July 1859, the steamship *Clarence* arrived in the port of Brisbane with news of the creation of a new colony to be known as Queensland.

Our public program of tours of the homestead continues; independently and, in partnership with the Moreton Bay Environmental Education Centre, a schools program seeks to nourish young minds. Newstead House is also a popular destination for groups of older visitors.

A special relationship has been forged with the Brisbane City Council to ensure that both Newstead House and Newstead Park [the remnant of the original Newstead Estate] are better understood in an historical, social and recreational context courtesy of elements such as the 'Talking Tree' 'Brisbane Blooms' storyboards, the Alice through the Looking Glass Playspace, a host of historically significant memorials and the Sunday concert series when Newstead House plays host to an afternoon of free music through the Brisbane City Council's *Bands in Parks* initiative.

A second reprint of the *Breakfast Creek Heritage Precinct* brochure has been made possible through the generosity of local Brisbane City Councillor David McLachlan. This is an initiative of the Board and management of Newstead House with the aim of lifting the profile of the Precinct.

Newstead House has also been a major contributor to the work of *Brisbane's Living Heritage Network*, the peak body for the promotion of the cultural landscape of South East Queensland. The homestead hosted a photographic exhibition to coincide with Proclamation Day activities and was a substantial contributor to the epublication '150 Things in which to experience the Cultural Landscape of South East Queensland'.

Newstead House also worked closely with the Department of Public Works and the Department of the Environment and Resource Management to create the innovative 'Colonial Brisbane Heritage Walk', whereby an animated commentary can be downloaded from the internet into any MP3 player.

As a place of public historical endeavour since 1939, Newstead House continues to respond to public expectations on the occasion of special anniversaries such as Queensland Day, Proclamation Day, Heritage Week, International Museums Day and Museums Alight.

The Board met formally on 10 September 2009, 22 October 2009, 16 December 2009, 11 February 2010 and 25 May 2010. Trustees receive no remuneration.

## Review of operations

Working with officers of the Department of the Environment and Resource Management and the Department of Public Works, the provision of Equal Access at Newstead House remains the Board's most pressing concern. A proposal to have a lift built within the shell of the former Annex has been identified as the most appropriate response and the Board acknowledges the assistance of the aforementioned departments in seeking to realize this goal.

The Board also continues to seek out funding for urgent tasks including the repainting of the exterior of the homestead, resolution to the ongoing battle with white ants, gutter replacement, security shop repairs and shop refurbishment.

*The Friends of Newstead Inc.* continue to assist the Board in the public presentation of Newstead House as a significant element of the State's history and without the efforts of a small band of volunteers, who act as *docents* Monday to Thursday and Sundays and public holidays, the doors to Newstead House would have closed a long time ago.

This year's Drover's Award, given by the Newstead House Trust for exemplary service to Newstead House, was presented to *Friends* member Joy Lloyd, a member of both the weekday and Sunday and public holidays roster.

## Review of financial goals

Funding from the Queensland Government amounted to an operational grant of \$100 000.00 in year 2009–2010.

This level of financial support is acknowledged with appreciation, as is the level of assistance given to the Board by senior officers within the Department of Environment and Resource Management.

## Proposed forward operations

The year ahead will be a time of change with the resignation of the Board Secretary effective 16 July 2010 and the retirement of a majority of our long-time volunteers providing an opportunity for a review of the ways Newstead House responds to its constituency.

Board meetings will continue to establish ways in which Newstead can be more efficient at 'the business of its History' and Trustees are mindful of their responsibilities to attract a new generation of Friends of Newstead House who share the Vision of its founders, Barbara Gibson, Arch Guymer and Clem Jones.

Kirsti Simpson  
Chair  
Board of Trustees of Newstead House

**The Board of Trustees of Newstead House  
Financial Statements 2009-10**

**Contents**

	Page No.
Statement of Comprehensive Income	45
Statement of Financial Position	46
Statement of Changes in Equity	47
Statement of Cash Flows	48
Notes to and Forming Part of the Financial Statements	49
Management Certificate	59

**General Information**

These financial statements cover The Board of Trustees of Newstead House.

The Board of Trustees of Newstead House is constituted under the *Newstead House Trust Act 1939*.

Newstead House is located at Newstead Park, Corner Breakfast Creek Road and Newstead Avenue, Newstead Queensland 4006.

A description of the nature of the Board's operations and its principal activities is included in the notes to the financial statements.

For information in relation to the Board's financial statements please call (07) 3224 7524, email [kim.davis@derm.qld.gov.au](mailto:kim.davis@derm.qld.gov.au) or visit the website of the Department of Environment and Resource Management. The financial statement for the Board can be found

Amounts shown in these financial statements may not add to the correct sub-totals or totals due to rounding.

**THE BOARD OF TRUSTEES OF NEWSTEAD HOUSE  
STATEMENT OF COMPREHENSIVE INCOME  
FOR THE YEAR ENDED 30 JUNE 2010**

	Note	2010 \$	2009 \$
<b>Income from Continuing Operations</b>			
Grant from State Government		183,400	200,000
Admission fees		19,754	17,879
Function fees		4,012	9,292
Tour fees		3,526	3,708
Donations		2,821	53,782
Other		99	310
<b>Total Income from Continuing Operations</b>		<u>213,612</u>	<u>284,970</u>
<b>Expenses from Continuing Operations</b>			
Employee expenses	2	89,780	87,678
Supplies and services	3	25,048	24,883
Building expenses	4	24,459	36,784
Depreciation		8,015	7,150
<b>Total Expenses from Continuing Operations</b>		<u>147,302</u>	<u>156,495</u>
<b>Operating Result from Continuing Operations</b>	5	<u>66,310</u>	<u>128,475</u>
<b>Other Comprehensive Income</b>			
Increase (decrease) in asset revaluation surplus	8	95,151	(57,062)
<b>Total Other Comprehensive Income</b>		<u>95,151</u>	<u>(57,062)</u>
<b>Total Comprehensive Income</b>		<u>161,461</u>	<u>71,413</u>

*The accompanying notes form part of these statements.*

**THE BOARD OF TRUSTEES OF NEWSTEAD HOUSE  
STATEMENT OF FINANCIAL POSITION  
AS AT 30 JUNE 2010**

	Note	2010 \$	2009 \$
<b>Current Assets</b>			
Cash and cash equivalents	6	176,129	94,573
Prepayments		527	-
Receivables		82	380
<b>Total Current Assets</b>		<u>176,738</u>	<u>94,953</u>
<b>Non Current Assets</b>			
Property, plant and equipment	7	1,975,750	1,887,096
<b>Total Non Current Assets</b>		<u>1,975,750</u>	<u>1,887,096</u>
<b>Total Assets</b>		<u>2,152,488</u>	<u>1,982,049</u>
<b>Current Liabilities</b>			
Payables		4,943	4,953
Unearned revenue		-	1,130
Accrued employee benefits		69,636	47,773
<b>Total Current Liabilities</b>		<u>74,579</u>	<u>53,856</u>
<b>Non Current Liabilities</b>			
Accrued employee benefits		-	11,745
<b>Total Non Current Liabilities</b>		<u>-</u>	<u>11,745</u>
<b>Total Liabilities</b>		<u>74,579</u>	<u>65,601</u>
<b>Net Assets</b>		<u>2,077,909</u>	<u>1,916,448</u>
<b>Equity</b>			
Asset revaluation surplus	8	1,943,786	1,848,635
Accumulated surplus		134,123	67,813
<b>Total Equity</b>		<u>2,077,909</u>	<u>1,916,448</u>

*The accompanying notes form part of these statements.*

**THE BOARD OF TRUSTEES OF NEWSTEAD HOUSE**  
**STATEMENT OF CHANGES IN EQUITY**  
**FOR THE YEAR ENDED 30 JUNE 2010**

	Accumulated Surplus		Asset Revaluation Surplus (Note 8)		Total	
	2010	2009	2010	2009	2010	2009
	\$	\$	\$	\$	\$	\$
<b>Balance as at 1 July</b>	67,813	(60,662)	1,848,635	1,905,697	1,916,448	1,845,035
Operating results from continuing operations	66,310	128,475	-	-	66,310	128,475
<i>Total Other Comprehensive Income</i>						
- Increase/(decrease) in asset revaluation surplus	-	-	95,151	(57,062)	95,151	(57,062)
<b>Balance as at 30 June</b>	<b>134,123</b>	<b>67,813</b>	<b>1,943,786</b>	<b>1,848,635</b>	<b>2,077,909</b>	<b>1,916,448</b>

*The accompanying notes form part of these statements.*

**THE BOARD OF TRUSTEES OF NEWSTEAD HOUSE  
STATEMENT OF CASH FLOWS  
FOR THE YEAR ENDED 30 JUNE 2010**

	Notes	2010 \$	2009 \$
<b>CASH FLOWS FROM OPERATING ACTIVITIES</b>			
Inflows:			
Grant from State Government		183,400	200,000
Admission fees		19,672	17,879
Function fees		3,261	7,792
Tour fees		3,526	3,708
Donations		2,821	53,782
Other		99	310
GST input tax credits from ATO		4,439	10,640
GST collected from customers		3,023	3,136
Outflows:			
Employee expenses		(80,189)	(80,635)
Supplies and services		(25,047)	(24,883)
Building expenses		(24,459)	(36,784)
GST paid to suppliers		(4,639)	(10,366)
GST remitted to ATO		(2,833)	(3,345)
<b>Net cash provided by (used in) operating activities</b>	<b>5</b>	<b>83,074</b>	<b>141,234</b>
<b>CASH FLOWS FROM INVESTING ACTIVITIES</b>			
Outflows:			
Payments for property, plant and equipment		(1,518)	(49,824)
<b>Net cash provided by (used in) investing activities</b>		<b>(1,518)</b>	<b>(49,824)</b>
<b>Net increase (decrease) in cash held</b>		<b>81,556</b>	<b>91,410</b>
Cash at beginning of the financial year		94,573	3,163
<b>Cash at end of the financial year</b>	<b>6</b>	<b>176,129</b>	<b>94,573</b>

*The accompanying notes form part of these statements*

**THE BOARD OF TRUSTEES OF NEWSTEAD HOUSE**  
**NOTES TO AND FORMING PART OF THE FINANCIAL STATEMENTS 2009-10**

**Objectives and Principal Activities of the Board**

The objective of the Board is to govern, manage and control Newstead House, the oldest surviving residence in Brisbane.

The Board is primarily funded for the services it delivers through grant funding from the State Government. It also provides the following on a fee for service basis:

- Admission to Newstead House;
- Tours of Newstead House; and
- Functions.

**Note 1 Summary of Significant Accounting Policies**

**(a) Statement of Compliance**

This financial report is a general purpose financial report that has been prepared in accordance with Australian Accounting Standards and Interpretations as well as the Treasurer's Minimum Reporting Requirements for the year ending 30 June 2010, and other authoritative pronouncements.

Except where stated, the historical cost convention is used.

The accounting policies adopted by the Board are materially consistent with those for the previous year.

**(b) The Reporting Entity**

The financial statements include the value of all revenues, expenses, assets, liabilities and equity of the Board.

**(c) Revenue**

Revenue from the sale of goods/services is recognised upon the delivery of goods to customers. This involves either invoicing for related goods/services and/or the recognition of accrued revenue.

All revenue is stated net of the amount of Goods and Services Tax (GST).

User charges and fees are recognised as revenue when invoices for the related services are issued. Deposits received in advance for functions yet to take place as at 30 June 2010 are treated as unearned.

**(d) Grants and Contributions**

Grants, contributions, donations and gifts that are non-reciprocal in nature are recognised as revenue in the year in which the Board obtains control over them. Where grants are received that are reciprocal in nature, revenue is accrued over the term of the funding arrangements.

Contributed assets are recognised at their fair value. Contributions of services are recognised only when a fair value can be determined reliably and the services would be purchased if they had not been donated.

**(e) Cash and Cash Equivalents**

For the purposes of the Statement of Financial Position and the Statement of Cash Flows, cash assets include all cash and cheques receipted but not banked as at 30 June as well as deposits at call with financial institutions.

**THE BOARD OF TRUSTEES OF NEWSTEAD HOUSE  
NOTES TO AND FORMING PART OF THE FINANCIAL STATEMENTS 2009-10**

**Note 1 Summary of Significant Accounting Policies (continued)**

**(f) Receivables**

Trade debtors are recognised at the amounts due at the time of sale or service delivery. Settlement on these amounts is required within 30 days from invoice date.

The collectability of receivables is assessed periodically with provision being made for impairment. All known bad debts have been written-off as at 30 June.

**(g) Acquisition of Assets**

Actual cost is used for the initial recording of all non-current physical asset acquisitions. Cost is determined as the value given as consideration plus costs incidental to the acquisition, including all other costs incurred in preparing the asset to be ready for use, including architects' fees and engineering design fees. However, any training costs are expensed as incurred.

Assets acquired at non cost or for nominal consideration are recognised at their fair value at date of acquisition in accordance with AASB 116 *Property, Plant and Equipment*.

**(h) Property, Plant and Equipment**

Plant and equipment are included in the accounts at cost less accumulated depreciation. The threshold for the capitalisation of plant and equipment is \$1,000.

Buildings are included in the accounts at fair value. The threshold for the capitalisation of buildings is \$10,000.

Land is included in the accounts at fair value. The threshold for the capitalisation of land is \$1.

Assets that are donated to the heritage collection are included in the accounts at a value as assessed by a registered valuer. In 2010, an independent valuation of the heritage collection was performed by Hind's Antiques Pty Ltd. The valuation of these assets is based on fair value. The threshold for recognition of assets in the heritage collection is \$1,000.

Items with a lesser value than the class capitalisation thresholds are expensed in the year of acquisition.

**(i) Depreciation of Property, Plant and Equipment**

Property, plant and equipment is depreciated on a straight-line basis so as to allocate the net cost or revalued amount of each asset, less its estimated residual value, progressively over its estimated useful life to the Board.

Depreciation is not charged on buildings due to their historical significance.

Depreciation is not charged on land as it has an unlimited useful life.

For each class of depreciable asset the following depreciation rates were used:

<b>Class</b>	<b>Rate %</b>
Plant and Equipment:	
Computer	27%
Fittings	7.5%
Fire Alarms and Detectors	5%
Telephone System	5%
Other Equipment	2.5% to 20%

**THE BOARD OF TRUSTEES OF NEWSTEAD HOUSE**  
**NOTES TO AND FORMING PART OF THE FINANCIAL STATEMENTS 2009-10**

**Note 1 Summary of Significant Accounting Policies (continued)**

**(j) Revaluations of Non-Current Physical Assets**

Land, buildings and the heritage collection are measured at fair value in accordance with AASB 116 *Property, Plant and Equipment* and Queensland Treasury's *Non-Current Asset Accounting Policies for the Queensland Public Sector*.

The valuation of land is based on fair value principles taking into consideration there is no open market for the land with its current zoning and use. The valuation of Newstead House and the Resource Centre is based on replacement cost as no ready market exists for similar heritage assets. These assets measured at fair value are comprehensively revalued at least every five years with interim valuations, using appropriate indices, being otherwise performed on an annual basis where there has been a material variation in the index.

The last comprehensive valuation of Newstead House, the Resource Centre and underlying land was conducted in the 2006-07 year. In years where comprehensive revaluations are not conducted, an interim valuation is applied using an appropriate index for buildings and an index provided by registered valuers for land.

Revaluation of heritage assets is conducted annually on the basis of fair value.

Any revaluation increment arising on the revaluation of an asset is credited to the asset revaluation reserve of the appropriate class, except to the extent it reverses a revaluation decrement for the class previously recognised as an expense. A decrease in the carrying amount on revaluation is charged as an expense, to the extent it exceeds the balance, if any, in the revaluation reserve relating to that class.

On revaluation, accumulated depreciation is restated proportionately with the change in the carrying amount of the asset and any change in the estimate of remaining useful life.

Only those assets, considered material to the value of their class to which they belong, are comprehensively revalued.

Separately identified components of assets are measured on the same basis as the assets to which they relate.

**(k) Impairment of Non-Current Assets**

All non-current physical assets are assessed for indicators of impairment on an annual basis. If an indicator of possible impairment exists, the Board determines the asset's recoverable amount. Any amount by which the asset's carrying amount exceeds the recoverable amount is recorded as an impairment loss.

The asset's recoverable amount is determined as the higher of the asset's fair value less costs to sell and depreciated replacement cost.

An impairment loss is recognised immediately in the Statement of Comprehensive Income, unless the asset is carried at a revalued amount. When the asset is measured at a revalued amount, the impairment loss is offset against the asset revaluation reserve of the relevant class to the extent available.

Where an impairment loss subsequently reverses, the carrying amount of the asset is increased to the revised estimate of its recoverable amount, but so that the increased carrying amount does not exceed the carrying amount that would have been determined had no impairment loss been recognised for the asset in prior years. A reversal of an impairment loss is recognised as income, unless the asset is carried at a revalued amount, in which case the reversal of the impairment loss is treated as a revaluation increase. Refer also Note 1(j).

**THE BOARD OF TRUSTEES OF NEWSTEAD HOUSE**  
**NOTES TO AND FORMING PART OF THE FINANCIAL STATEMENTS 2009-10**

**Note 1 Summary of Significant Accounting Policies (continued)**

**(l) Payables**

Trade creditors are recognised upon receipt of the goods or services ordered and are measured at the agreed purchase/contract price, gross of applicable trade and other discounts. Amounts owing are unsecured and are generally settled on 30 day terms.

**(m) Financial Instruments**

*Recognition*

Financial assets and financial liabilities are recognised in the Statement of Financial Position when the Board becomes party to the contractual provisions of the financial instrument.

*Classification*

Financial instruments are classified and measured as follows:  
Cash and cash equivalents - held at fair value through profit and loss  
Receivables - held at amortised cost  
Payables - held at amortised cost

The Board does not enter transactions for speculative purposes, or for hedging. It holds no financial assets classified as at fair value through profit and loss or classified as held to maturity.

All disclosures relating to the measurement basis and financial risk management of other financial instruments held by the Board are included in Note 11.

**(n) Employee Benefits**

Payroll tax and workers' compensation insurance are a consequence of employing employees, but are not counted in an employee's total remuneration package. They are not employee benefits and are recognised separately as employee related expenses.

*Wages, Salaries, Annual Leave and Sick Leave*

Liabilities for wages, salaries and annual leave, are recognised, and are measured as the amount unpaid at the reporting date at current pay rates in respect of employees' services up to that date and include related on-costs.

As sick leave is non-vesting, an expense is recognised for this leave as it is taken.

*Long Service Leave*

A liability for long service leave is recognised, and is measured by the use of a shorthand method derived by the Queensland State Actuary. The result of this method does not differ materially from that which would be arrived at, should a calculation of the present value of expected future payments to be made in respect of services provided by employees up to balance date. The method used incorporates consideration of expected future wage and salary levels and workforce statistical history of employee departure and length of service.

*Superannuation*

Employer superannuation contributions are paid to QSuper, the superannuation plan for Queensland government employees, at rates determined by the State Actuary.

No liability is recognised for accruing superannuation benefits in these statements, the liability being held on a whole-of-Government basis and reported in the financial report prepared pursuant to AASB 1049 *Whole of Government and General Government Sector Financial Reporting*.

**(o) Taxation**

The Board is a State body as defined under the *Income Tax Assessment Act 1936* and is exempt from Commonwealth taxation with the exception of Fringe Benefits Tax (FBT) and Goods and Services Tax (GST). As such, GST credits receivable from/payable to the Australian Taxation Office are recognised and accrued.

**THE BOARD OF TRUSTEES OF NEWSTEAD HOUSE**  
**NOTES TO AND FORMING PART OF THE FINANCIAL STATEMENTS 2009-10**

**Note 1 Summary of Significant Accounting Policies (continued)**

**(p) Insurance**

The Board's non-current physical assets and other risks are insured through the Queensland Government Insurance Fund, premiums being paid on a risk assessment basis. In addition, the Board pays premiums to WorkCover Queensland in respect of its obligations for employee compensation.

**(q) Issuance of Financial Statements**

The financial statements are authorised for issue by the Chairperson and the Director of the Board of Trustees of Newstead House at the date of signing the Management Certificate.

**(r) Judgements**

The Board has made no judgements that may cause a material adjustment to the carrying amounts of assets and liabilities within the next reporting period.

**(s) Comparatives**

Comparative information has been restated where necessary to be consistent with disclosures in the current reporting period.

**(t) New and Revised Accounting Standards**

No Australian accounting standard and interpretation issued or amended and applicable for the first time in the 2009-10 financial year have an effect on the Board during this period. The Board did not voluntarily change any of its accounting policies during 2009-10.

The Board is not permitted to early adopt a new accounting standard ahead of the specified commencement date unless approval is obtained from the Treasury Department. Consequently, the Board has not applied any Australian accounting standards and interpretations that have been issued but are not yet effective. The Board applies standards and interpretations in accordance with their respective commencement dates.

The Board complied with the revised AASB 101 *Presentation of Financial Statements* as from 2009-10. This revised standard does not have any measurement or recognition implications. Pursuant to the change of terminology used in the revised AASB 101, the Balance Sheet is now re-named to the Statement of Financial Position, and the Cash Flow Statement has now been re-named to Statement of Cash Flows. The former Income Statement has been replaced by a Statement of Comprehensive Income. In line with the new concept of 'comprehensive income', the bottom of this new statement contains certain transactions that previously were detailed in the Statement of Changes in Equity (refer to the items under the sub-heading "Other Comprehensive Income" in the new Statement of Comprehensive Income). The Statement of Changes in Equity now only includes details of transactions with owners in their capacity as owners, in addition to the total comprehensive income for the relevant components of equity.

AASB 9 *Financial Instruments* and AASB 2009-11 *Amendments to Australian Accounting Standards arising from AASB 9 (AASB 1, 3, 4, 5, 7, 101, 102, 108, 112, 118, 121, 127, 128, 131, 132, 136, 139, 1023 and 1038 and Interpretations 10 and 12)* become effective from reporting periods beginning on or after 1 January 2013. The main impacts of these standards are that they will change the requirements for classification, measurement and disclosures associated with financial assets. The impact and materiality of these changes are yet to be determined.

All other Australian accounting standards and interpretations with future commencement dates are either not applicable to the Board, or have no material impact on the Board.

**THE BOARD OF TRUSTEES OF NEWSTEAD HOUSE**  
**NOTES TO AND FORMING PART OF THE FINANCIAL STATEMENTS 2009-10**

	<b>2010</b>	<b>2009</b>
	<b>\$</b>	<b>\$</b>
<b>Note 2 Employee Expenses</b>		
Salaries	78,803	73,384
Employer superannuation contributions	8,353	8,346
Guide allowances	2,624	5,948
<b>Total</b>	<b>89,780</b>	<b>87,678</b>

	<b>2010</b>	<b>2009</b>
Number of Employees	1	1
Also refer note 1(n) Employee Benefits for further information.		

**Note 3 Supplies and Services**

Electricity	4,300	3,854
Audit Fees	4,039	4,500
Telephone	3,176	3,262
Advertising	2,829	149
Projects	2,246	1,895
Stationery and printing	1,662	3,218
Functions	270	289
Other	6,526	7,716
<b>Total</b>	<b>25,048</b>	<b>24,883</b>

**Note 4 Building Expenses**

Insurance	10,478	11,250
Security	7,936	8,886
Cleaning	3,772	2,856
Maintenance	3,197	7,098
Rates	(978)	6,129
Equipment purchases	54	565
<b>Total</b>	<b>24,459</b>	<b>36,784</b>

**Note 5 Reconciliation of Operating Result to Net Cash Provided by (Used in) Operating Activities**

Operating Surplus/(Deficit)	66,310	128,475
Depreciation expense	8,015	7,150
Loss on sale of property, plant and equipment	-	-
Change in assets and liabilities:		
Increase/(Decrease) in accrued employee benefits	9,591	7,042
(Increase)/Decrease in receivables	298	(313)
Increase/(Decrease) in payables	(10)	-
Increase/(Decrease) in unearned revenue	(1,130)	(1,120)
<b>Net cash provided by (used in) operating activities</b>	<b>83,074</b>	<b>141,234</b>

**Note 6 Cash and Cash Equivalents**

Imprest accounts	171	182
Cash at bank	175,958	94,391
<b>Total</b>	<b>176,129</b>	<b>94,573</b>

**THE BOARD OF TRUSTEES OF NEWSTEAD HOUSE**  
**NOTES TO AND FORMING PART OF THE FINANCIAL STATEMENTS 2009-10**

**Note 7 Property, Plant and Equipment**

	2010		2009	
	\$	\$	\$	\$
Land		272,712		259,726
Buildings - Heritage		1,149,264		1,084,212
Buildings - Other		224,588		211,875
Heritage collection		262,050		257,650
Plant and Equipment (at cost)	125,482		123,964	
Accumulated Depreciation	(58,346)		(50,331)	
		<u>1,975,750</u>		<u>1,887,096</u>

Only those portions of land on which Newstead House and the accompanying Resource Centre are sited are recorded in the accounts of the Board of Trustees of Newstead House. The balance comprising Newstead Park is controlled by the Brisbane City Council.

Land and buildings were comprehensively revalued during the 2006-07 year using "fair value" principles. The valuations were updated in the 2009-10 year using appropriate indices – refer Note 1(j).

The assets which make up the heritage collection were comprehensively revalued in 2009-10 using "fair value" principles.

Plant and equipment is valued at cost.

**Property, Plant and Equipment Reconciliation**

	Land	Buildings - Heritage	Buildings - Other	Heritage Collection	Plant and Equipment	Total
	\$	\$	\$	\$	\$	\$
Carrying amount at 1 July 2009	259,726	1,084,212	211,875	257,650	73,633	1,887,096
Acquisitions	-	-	-	-	1,518	1,518
Disposals	-	-	-	-	-	-
Revaluation Increments	12,986	65,052	12,713	4,400	-	95,151
Depreciation	-	-	-	-	(8,015)	(8,015)
<b>Carrying amount at 30 June 2010</b>	<b>272,712</b>	<b>1,149,264</b>	<b>224,588</b>	<b>262,050</b>	<b>67,136</b>	<b>1,975,750</b>

	Land	Buildings - Heritage	Buildings - Other	Heritage Collection	Plant and Equipment	Total
	\$	\$	\$	\$	\$	\$
Carrying amount at 1 July 2008	286,925	1,089,661	212,940	281,000	30,959	1,901,485
Acquisitions	-	-	-	-	49,824	49,824
Disposals	-	-	-	-	-	-
Revaluation Increments	(27,199)	(5,449)	(1,065)	(23,350)	-	(57,063)
Depreciation	-	-	-	-	(7,150)	(7,150)
<b>Carrying amount at 30 June 2009</b>	<b>259,726</b>	<b>1,084,212</b>	<b>211,875</b>	<b>257,650</b>	<b>73,633</b>	<b>1,887,096</b>

The Board has plant and equipment with an original cost of \$26,320 (eight assets) with a written down value of zero still being used in the provision of services.

	2010	2009
	\$	\$
<b>Note 8</b>		
<b>Asset Revaluation Surplus by Class</b>		
Balance 1 July	1,848,635	1,905,697
Increments/(Decrements)		
Land	12,986	(27,199)
Buildings - Heritage	65,052	(5,449)
Buildings - Other	12,713	(1,065)
Heritage collection	4,400	(23,350)
<b>Balance 30 June</b>	<b>1,943,786</b>	<b>1,848,635</b>

The asset revaluation reserve represents the net effect of upward and downward revaluations of assets to fair value.

**THE BOARD OF TRUSTEES OF NEWSTEAD HOUSE  
NOTES TO AND FORMING PART OF THE FINANCIAL STATEMENTS 2009-10**

**Note 9 Contingencies**

As at 30 June 2010 there was one contingent liability which relates to a personal injury claim. As the Board is insured through the Queensland Government Insurance Fund the total exposure is the policy excess of \$2,000 (2009 \$nil).

There are no contingent assets of a significant nature as at 30 June 2010 (2009 \$nil).

**Note 10 Commitments for Expenditure**

There were no commitments of a significant nature as at 30 June 2010 (2009 \$nil).

**Note 11 Financial Instruments**

**(a) Categorisation of Financial Instruments**

The Board has the following categories of financial assets and financial liabilities:

Category	Note	2010 \$	2009 \$
Financial Assets			
Cash and cash equivalents	6	176,129	94,573
Receivables		82	380
<b>Total</b>		<b>176,211</b>	<b>94,953</b>
Financial Liabilities			
Payables		4,943	4,953
<b>Total</b>		<b>4,943</b>	<b>4,953</b>

**(b) Financial Risk Management**

The Board's activities expose it to a variety of financial risks - credit risk, liquidity risk and market risk.

The Board measures risk exposure using a variety of methods as follows -

Risk Exposure	Measurement method
Credit Risk	Ageing analysis, earnings at risk
Liquidity Risk	Sensitivity analysis
Market Risk	Interest rate sensitivity analysis

**(c) Credit Risk Exposure**

Credit risk exposure refers to the situation where the Board may incur financial loss as a result of another party to a financial instrument failing to discharge their obligation.

The maximum exposure to credit risk at balance date in relation to each class of recognised financial assets is the gross carrying amount of those assets inclusive of any provisions for impairment.

The following table represents the Board's maximum exposure to credit risk based on contractual amounts net of any allowances:

Maximum Exposure to Credit Risk			
Category	Note	2010 \$	2009 \$
<b>Financial Assets</b>			
Cash and cash equivalents	6	176,129	94,573
Receivables		82	380
<b>Total</b>		<b>176,211</b>	<b>94,953</b>

No collateral is held as security relating to financial assets held by the Board. No credit enhancements relate to the financial assets held by the Board.

**THE BOARD OF TRUSTEES OF NEWSTEAD HOUSE  
NOTES TO AND FORMING PART OF THE FINANCIAL STATEMENTS 2009-10**

**Note 11 Financial Instruments (continued)**

**(c) Credit Risk Exposure (continued)**

The Board manages credit risk through the use of a credit management strategy. This strategy aims to reduce the exposure to credit default by ensuring that the Board monitors all funds owed on a timely basis. Exposure to credit risk is monitored on an ongoing basis.

No financial assets and financial liabilities have been offset and presented net in the Statement of Financial Position.

The method for calculating any provision for impairment is based on past experience, current and expected changes in economic conditions and changes in client credit ratings.

There is no impairment loss for the current year (2009 - \$nil).

No financial assets have had their terms renegotiated so as to prevent them from ageing past due or impaired, and are stated at the carrying amounts as indicated.

The Board has no financial assets that are past due but not impaired or impaired financial assets.

**(d) Liquidity Risk**

Liquidity risk refers to the situation where the Board may encounter difficulty in meeting obligations associated with financial liabilities that are settled by delivering cash or another financial asset.

The Board is exposed to liquidity risk in respect of its payables.

The Board manages liquidity risk through the use of a liquidity management strategy. This strategy aims to reduce the exposure to liquidity risk by ensuring the Board has sufficient funds available to meet employee and supplier obligations as they fall due. This is achieved by ensuring that minimum levels of cash are held within the various bank accounts so as to match the expected duration of the various employee and supplier liabilities.

The following table sets out the liquidity risk of financial liabilities held by the Board. It represents the contractual maturity of financial liabilities, calculated based on cash flows relating to the liabilities at balance date.

	2010 Payable in			Total \$
	< 1year \$	1-5 years \$	> 5 years \$	
<b>Financial Liabilities</b>				
Payables	4,943	-	-	4,943
<b>Total</b>	<b>4,943</b>	-	-	<b>4,943</b>

	2009 Payable in			Total \$
	< 1year \$	1-5 years \$	> 5 years \$	
<b>Financial Liabilities</b>				
Payables	4,953	-	-	4,953
<b>Total</b>	<b>4,953</b>	-	-	<b>4,953</b>

**(e) Market Risk**

The Board does not trade in foreign currency and is not materially exposed to commodity price changes.

**(f) Interest Rate Sensitivity Analysis**

The Board has no interest bearing financial assets.

**THE BOARD OF TRUSTEES OF NEWSTEAD HOUSE  
NOTES TO AND FORMING PART OF THE FINANCIAL STATEMENTS 2009-10**

***(g) Fair Value***

The Board does not recognise any financial assets or financial liabilities at fair value.

The fair value of cash, cash equivalents, receivables and payables is assumed to approximate the value of the original transaction, less any provision for impairment.

## CERTIFICATE OF THE BOARD OF TRUSTEES OF NEWSTEAD HOUSE

These general purpose financial statements have been prepared pursuant to section 62(1) of the *Financial Accountability Act 2009* (the Act), relevant sections of the *Financial and Performance Management Standard 2009* and other prescribed requirements. In accordance with section 62(1)(b) of the Act we certify that in our opinion:

- (a) the prescribed requirements for establishing and keeping the accounts have been complied with in all material respects; and
- (b) the statements have been drawn up to present a true and fair view, in accordance with prescribed accounting standards, of the transactions of The Board of Trustees of Newstead House for the financial year ended 30 June 2010 and of the financial position of the Board at the end of that year.

C. Burgin  
Director

K. Simpson  
Chairperson

31 Aug 2010  
Date:

31 Aug 2010  
Date:



## INDEPENDENT AUDITOR'S REPORT

To The Board of Trustees of Newstead House

### Report on the Financial Report

I have audited the accompanying financial report of The Board of Trustees of Newstead House which comprises the statement of financial position as at 30 June 2010, and the statement of comprehensive income, statement of changes in equity and statement of cash flows for the year ended on that date, a summary of significant accounting policies, other explanatory notes and certificates given by the Chairperson and Director.

#### *The Board's Responsibility for the Financial Report*

The Board is responsible for the preparation and fair presentation of the financial report in accordance with prescribed accounting requirements identified in the *Financial Accountability Act 2009* and the *Financial and Performance Management Standard 2009*, including compliance with Australian Accounting Standards (including the Australian Accounting Interpretations). This responsibility includes establishing and maintaining internal controls relevant to the preparation and fair presentation of the financial report that is free from material misstatement, whether due to fraud or error; selecting and applying appropriate accounting policies; and making accounting estimates that are reasonable in the circumstances.

#### *Auditor's Responsibility*

My responsibility is to express an opinion on the financial report based on the audit. The audit was conducted in accordance with the *Auditor-General of Queensland Auditing Standards*, which incorporate the Australian Auditing Standards. These auditing standards require compliance with relevant ethical requirements relating to audit engagements and that the audit is planned and performed to obtain reasonable assurance whether the financial report is free from material misstatement.

An audit involves performing procedures to obtain audit evidence about the amounts and disclosures in the financial report. The procedures selected depend on the auditor's judgement, including the assessment of risks of material misstatement in the financial report, whether due to fraud or error. In making those risk assessments, the auditor considers internal control relevant to the entity's preparation and fair presentation of the financial report in order to design audit procedures that are appropriate in the circumstances, but not for the purpose of expressing an opinion on the effectiveness of the entity's internal control, other than in expressing an opinion on compliance with prescribed requirements. An audit also includes evaluating the appropriateness of accounting policies and the reasonableness of accounting estimates made by the Board, as well as evaluating the overall presentation of the financial report including any mandatory financial reporting requirements as approved by the Treasurer for application in Queensland.

I believe that the audit evidence obtained is sufficient and appropriate to provide a basis for my audit opinion.

### *Independence*

The *Auditor-General Act 2009* promotes the independence of the Auditor-General and all authorised auditors. The Auditor-General is the auditor of all Queensland public sector entities and can only be removed by Parliament.

The Auditor-General may conduct an audit in any way considered appropriate and is not subject to direction by any person about the way in which audit powers are to be exercised. The Auditor-General has for the purposes of conducting an audit, access to all documents and property and can report to Parliament matters which in the Auditor-General's opinion are significant.

### *Auditor's Opinion*

In accordance with s.40 of the *Auditor-General Act 2009* –

- (a) I have received all the information and explanations which I have required; and
- (b) in my opinion –
  - (i) the prescribed requirements in respect of the establishment and keeping of accounts have been complied with in all material respects; and
  - (ii) the financial report has been drawn up so as to present a true and fair view, in accordance with the prescribed accounting standards of the transactions of The Board of Trustees of Newstead House for the financial year 1 July 2009 to 30 June 2010 and of the financial position as at the end of that year.



M T BOOTH FCPA  
(as Delegate of the Auditor-General of Queensland)

Queensland Audit Office  
Brisbane

